

Our Family History

**The story of the Wilkinson, Bowtle,
Gillingham, Edwards, Ransome,
Butcher, Overett and Simpson families.**

Volume 6

**Frederick Arthur Ransome
1900 – 1954
and his ancestors**

Volume 6 Contents

Volume 6 Contents	iii
Volume Index	iv
Volume 6 Introduction	v
Descendants of Frederick Arthur Ransome 1900 – 1954	vi
Ancestors of Frederick Arthur Ransome 1900 - 1954	vii
Migration of Frederick Arthur Ransome's Ancestors	viii
Chapter 1 Frederick Arthur Ransome 1900 - 1954	1:1
Chapter 2 William Pym Ransome 1874 - 1949	2:1
Chapter 3 Pleasance Hines 1872 - 1948	3:1
Chapter 4 Thomas William Ransome 1838 - 1912	4:1
Chapter 5 Mary Ann Leek 1846 - 1931	5:1
Chapter 6 Jonathan Hines 1844 -1928	6:1
Chapter 7 Elizabeth Lambley 1848 - 1904	7:1
Chapter 8 Unknown father of Thomas William Ransome	8:1
Chapter 9 Martha Ransome c1817 - 1860	9:1
Chapter 10 Timothy Leek c1795 - 1880	10:1
Chapter 11 Mary Brown 1812 - 1878	11:1
Chapter 12 John Warner c1823 - 1882	12:1
Chapter 13 Pleasance Hines 1826 - 1890	13:1
Chapter 14 Mary Ann Lambley c1820 - 1888	14:1
Chapter 15 William Ransome 1778 - 1860	15:1
Chapter 16 Mary Manthorpe c1772 – 1841	16:1
Chapter 17 Stephen Leek c1771 – 1848	17:1
Chapter 18 Sarah Doughty c1765 - 1844	18:1
Chapter 19 John Brown c1784 - 1864	19:1
Chapter 20 Mary Byles c1783 - 1855	20:1
Chapter 21 William Warner c1791 - 1850	21:1
Chapter 22 Ann Pressney c1794 - 1863	22:1
Chapter 23 Jonathan Hines c1789 - 1827	23:1
Chapter 24 Pleasance Smith c1788 - 1867	24:1
Chapter 25 Benjamin Lambley c1796 - 1866	25:1
Chapter 26 Sarah Easter c1797 - 1871	26:1
Chapter 27 Xxxxx	27:1

Volume Index

Volume 1 Introduction, Harold Eric Wilkinson, Gloria Brenda Charmian Olive Gillingham, John William Frederick Ransome, Molly Joan Overett and their descendants

Volume 2 Herman Robert Wilkinson 1897 - 1964 and his ancestors

Volume 3 Flora Bowtle 1903 - 1982 and her ancestors

Volume 4 Frederick Dan Gillingham 1903 - 1983 and his ancestors

Volume 5 Violet Olive Blanche Edwards 1901 - 1978 and her ancestors

Volume 6 Frederick Arthur Ransome 1900 - 1954 and his ancestors

Volume 7 Florence May Butcher 1905 - 1986 and her ancestors

Volume 8 Stanley George Walter Overett 1899 – 1992 and his ancestors

Volume 9 Grace Ellen Simpson 1901 – 1982 and her ancestors

Volume 6 Introduction
Frederick Arthur Ransome (1900 - 1954)
and his ancestors

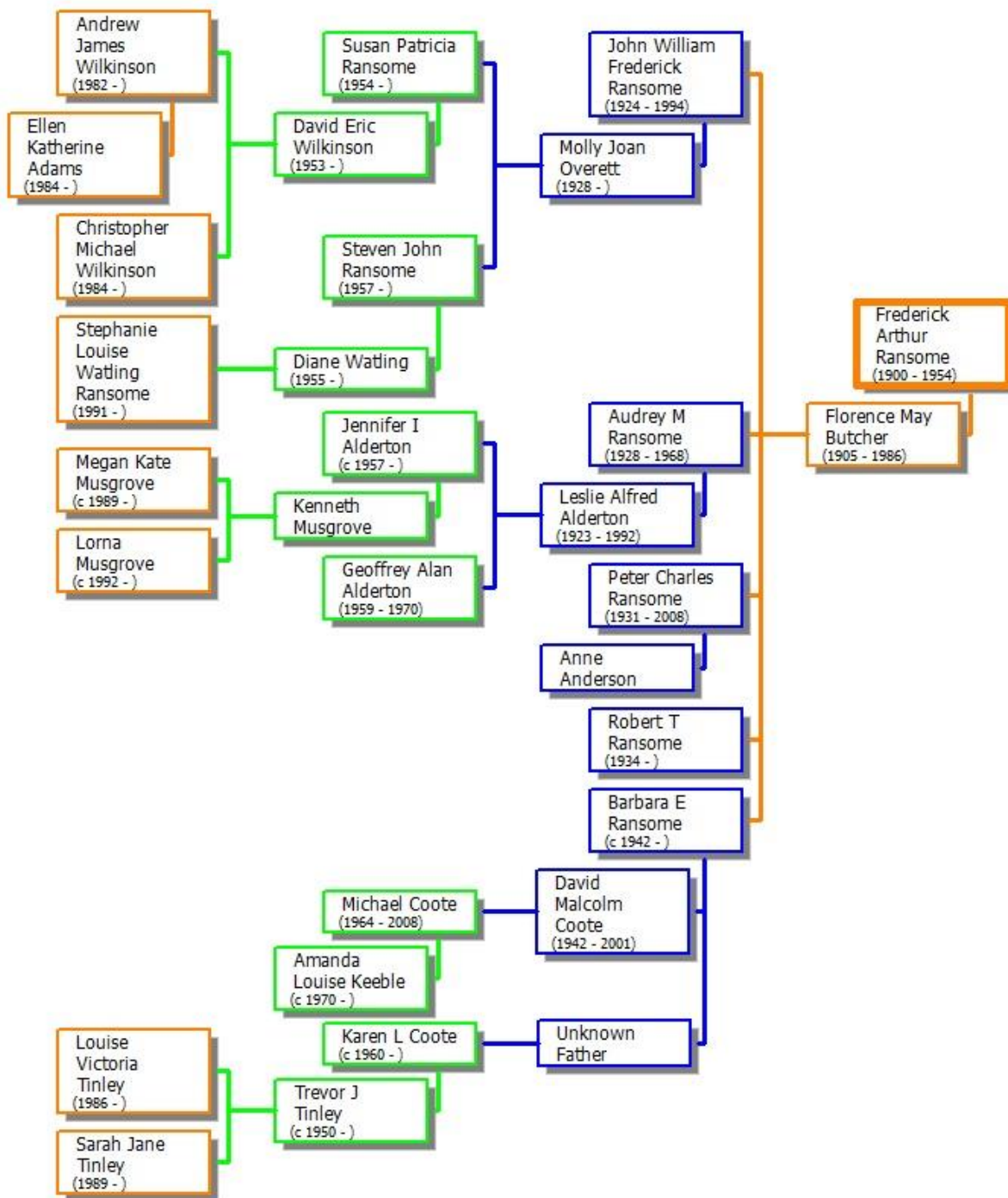
Frederick was a grandfather I never knew, although I was told we met when I was a few weeks old, shortly before his early death. He died in 1954 aged 53 of a blood clot after undergoing experimental heart bypass surgery.

The Ransome family name originates from Wood Dalling in Norfolk. This unusual migration to Ipswich was due to marriage with a man from Framlingham. The other ancestors came from around the Ipswich area, from places such as Debenham, Framlingham, Woodbridge and East Bergholt for example.

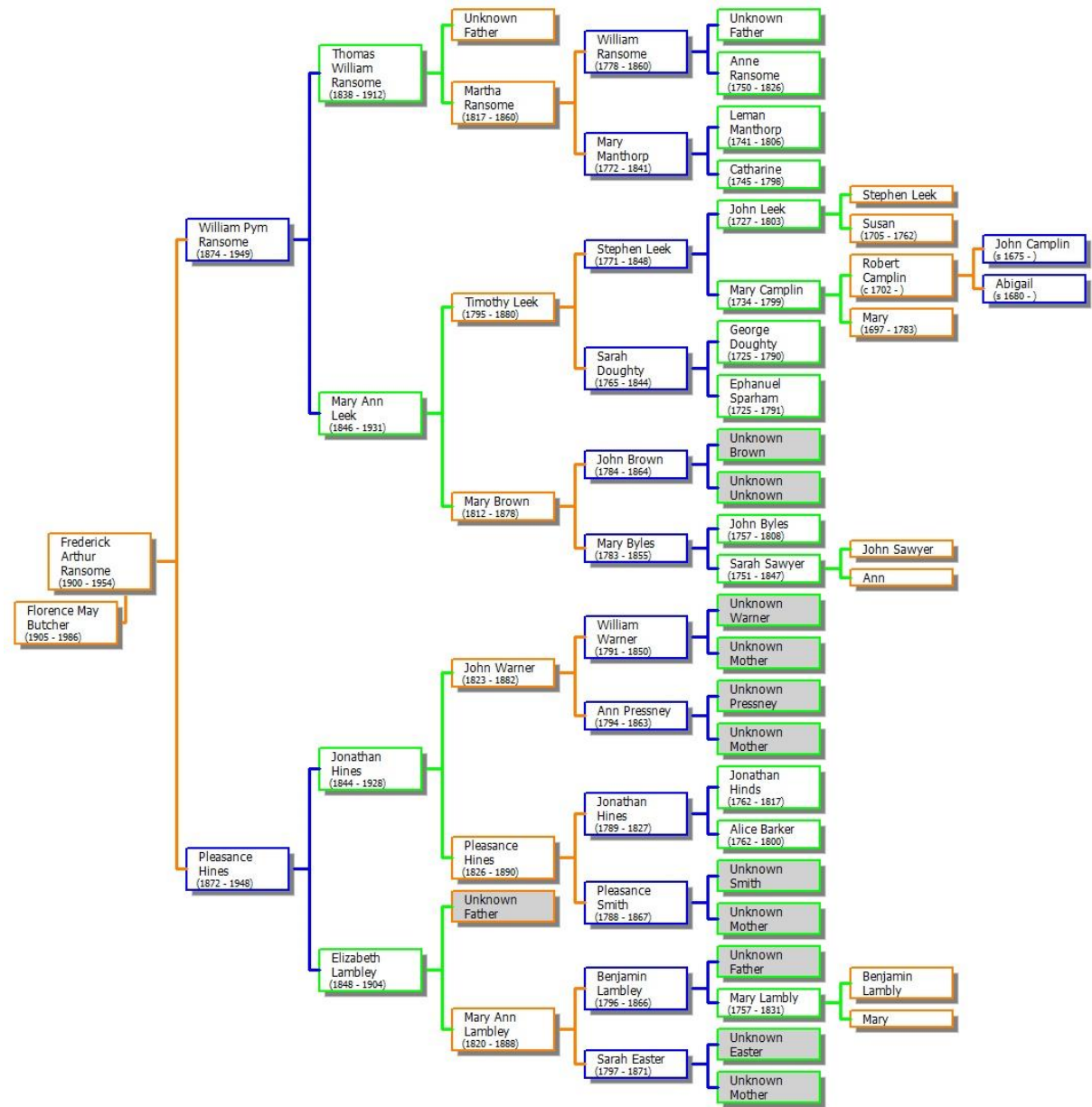
No particular trade flows through this family, occupations include mariner, fisherman, railway porter, quay porter, baker, confectioner, cooper, servant, charwoman, laundress, stay maker and labourer.

Susan Patricia Wilkinson (nee Ransome)
August 2013

Descendants of Frederick Arthur Ransome 1900 – 1954



Ancestors of Frederick Arthur Ransome 1900 - 1954



British Monarchy

1952-	1936-1952	1936	1910-1936	1901-1910	1837-1901	1830-1837	1820-1830	1760-1820	1727-1760	1714-1727	1707-1714	1689-1702	1685-1688	1660-1685
Elizabeth II	George VI	Edward VIII	George V	Edward VII	Victoria	William IV	George IV	George III	George II	George I	Anne	William III	James II	Charles II

Historical Events

1969	1939-1945	1928	1918	1914-1918	1903	1899-1902	1879	1853-1856	1815	1807	1805	1789	1775	1770	1769	1707	1666	1665
Man walks on the moon	WWII	Women >21 can vote	Women >30 can vote	WWI	First flight	Boer war	Zulu war	Crimean war	Waterloo	Slave trade abolished	Trafalgar	French Revolution	American War of Independence	James Cook lands at Botany Bay	James Watt perfects the steam engine	Act of Union between England and Scotland	Great fire of London	Great plague of London

Migration of Frederick Arthur Ransome's Ancestors



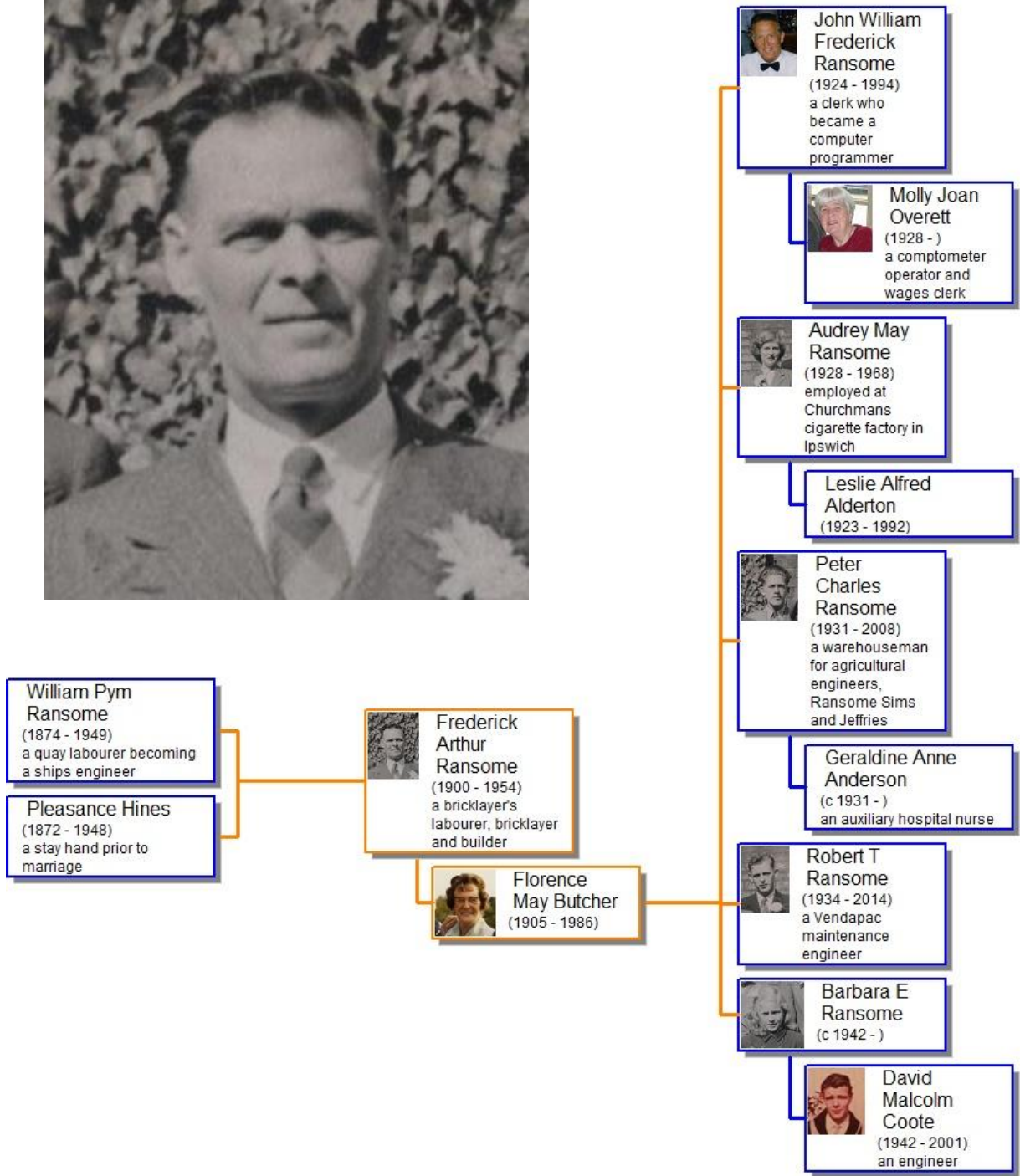
Legend

	<1650	>=1650	>=1700	>=1750
>=1800	>=1850	>=1900	>=1950	

Chapter 1 Frederick Arthur Ransome 1900 - 1954



Direct ancestors and descendants of Frederick Arthur Ransome



Frederick Arthur Ransome ^{1,2,3,4}

1900 - 1954

Frederick was also known as Frederick William Ransome, Frederick William on birth certificate, and Frederick Arthur on marriage certificate.⁵ He was born about May 1900 in Ipswich, Suffolk, son of William Pym Ransome and Pleasance, formerly Hines.^{1,2,4} He was a bricklayer's labourer, bricklayer and a builder.^{5,11,12}

Frederick appeared on the census of 31st March 1901 at 93 Fore Hamlet, Ipswich, Suffolk (son aged 10 months, living with mother and a sibling, born Ipswich, Suffolk)³ and on the census of 2nd April 1911 at 9 Felaw Street, Ipswich, Suffolk (son aged 10 single, scholar living with mother, four siblings and a cousin, born Ipswich, Suffolk).⁴

Frederick married Florence May Butcher, daughter of John Starling Butcher and Eleanor Durrell formerly Norman, about February 1924 in Ipswich, Suffolk.^{1,6} They had five children; **John William Frederick Ransome 1924-1994**; Audrey M Ransome 1928-1968; Peter Charles Ransome 1931-2008; Robert Thomas Ransome 1934-2014 ; and Barbara E Ransome 1942-.

Frederick and Florence lived at 83 Cavendish Street, Ipswich, Suffolk^{7,11} from before 1931 until Frederick died aged 53 from a blood clot following experimental heart bypass surgery at Guys Hospital, London on Tuesday 23rd March 1954 at Hill End Hospital, St. Albans, Hertfordshire.^{1,8,9,5,7,10}

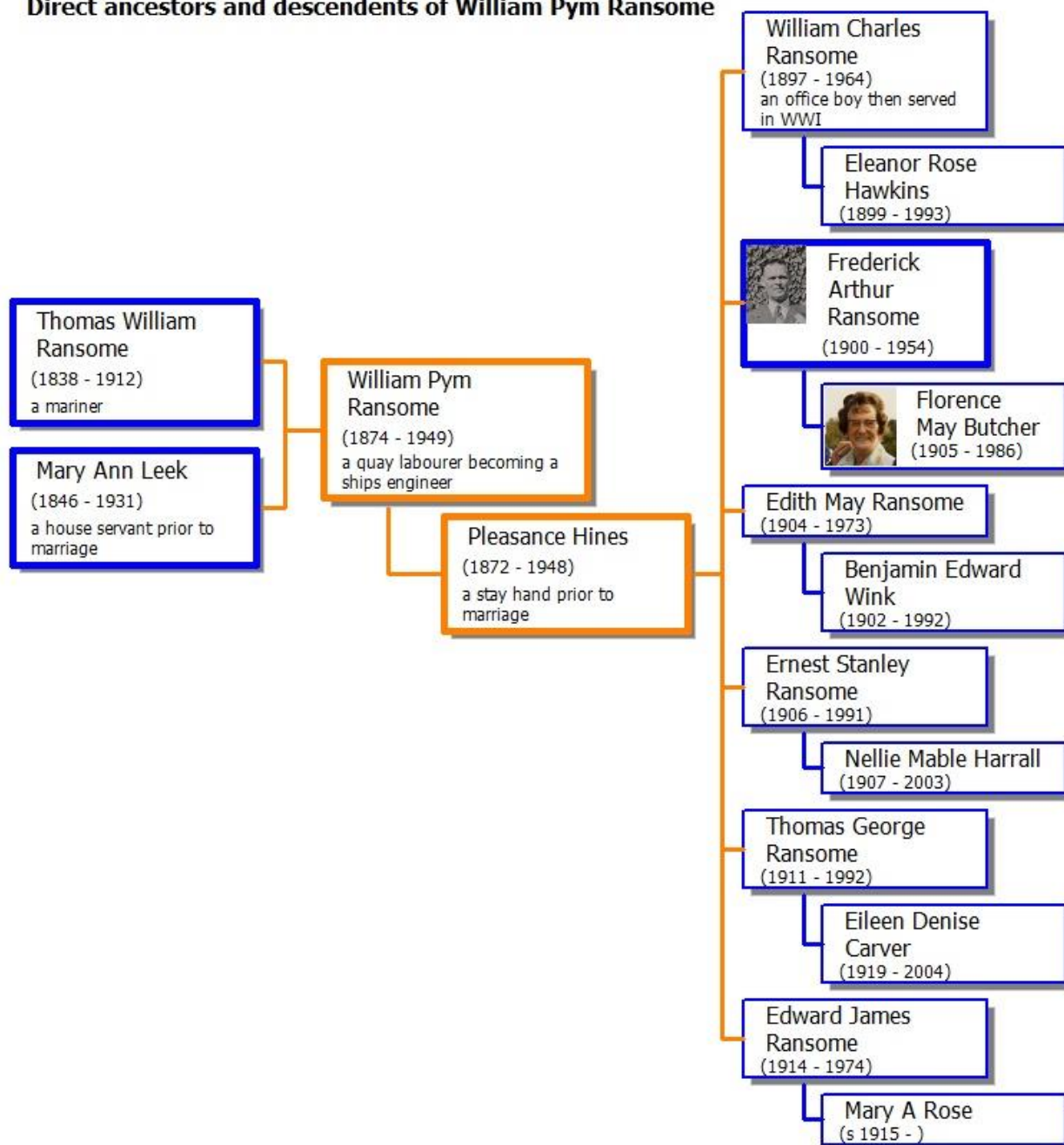
He was buried on Tuesday 30th March 1954 in the New Cemetery, Cemetery Lane, Ipswich, Suffolk, following a service at 2pm in the New Cemetery Church.¹⁰ Frederick's will was proved on 23rd June 1954 in Ipswich, Suffolk, effects of £505 (~£8,800 in 2005) administered by Florence May Ransome widow.⁷

References

1. Steven John Ransome personal communication, Family Tree via email - Jan 2003.
2. England and Wales Birth Index 1837 - 2005, Ipswich 1900 Q2 vol:4a page:1004, online at www.ancestry.co.uk and www.findmypast.co.uk.
3. Census 1901, class:RG13 piece:1777 folio:76 page:47, online at www.ancestry.co.uk and www.findmypast.co.uk.
4. Census 1911, RG14PN10816 RG78PN584 RD213 SD1 ED18 SN298, online at www.ancestry.co.uk and www.findmypast.co.uk.
5. Molly Joan Ransome nee Overett personal contribution.
6. England and Wales Marriage Index 1837 - 2005, Ipswich 1924 Q1 vol:4a page:1351, online at www.ancestry.co.uk and www.findmypast.co.uk.
7. England and Wales National Probate Calendar (Index to Wills and Administrations), 1858-1966, online at www.ancestry.co.uk.
8. England and Wales Death Index 1837 - 2005, St. Albans 1954 Q1 vol:4b page:242, online at www.ancestry.co.uk and www.findmypast.co.uk.
9. Susan Patricia Wilkinson nee Ransome personal communication.
10. Suffolk Records Office (Ipswich) - Ipswich Evening Star, Friday 26th March 1954 page:19.
11. Birth Certificate, son Peter Charles.
12. Marriage Certificate, son Peter Charles.

Chapter 2 William Pym Ransome 1874 - 1949

Direct ancestors and descendents of William Pym Ransome



William Pym Ransome^{1,2,3}

1874 - 1949

William, father of Frederick, was a quay labourer who became a ships engineer by 1901^{4,5,6}. He was born about August 1874 in Ipswich, Suffolk^{1,2,3,4,5,6} but no baptism record has been found. He appeared on the census of 3rd April 1881 at 5 Handford Square, St. Peter, Ipswich, Suffolk (son aged 6 single, scholar living with parents and three siblings, born Ipswich, Suffolk).³ He then appeared on the census of 5th April 1891 at 6 Handford Square, St. Peter, Ipswich, Suffolk (son aged 17 single, quay labourer living in four rooms with parents and five siblings, born Ipswich, Suffolk).⁴

On 30th November 1891 William attested to join the Suffolk Artillery EDRA (Eastern Division Royal Artillery) which was a part-time militia force being a labourer aged 18 years 1 month and citing his father as Thomas Ransome of Handford Road Ipswich. He was 5' 7½" tall, weighed 125lbs, chest 33-34½", complexion fresh, brown eyes, dark brown hair, Church of England with a mole between the shoulder blades. He was declared fit but his chest was 1" below the minimum requirement but it was stated that he should develop into an efficient soldier.⁷ William finished his military service five days later on Friday 4th December 1891 (the reason he only lasted five days was not given but we wonder if he had lied about his age as he was only 17 and a couple of months).⁷

William married Pleasance Hines, daughter of Jonathan Hines and Elizabeth formerly Lambley, on Sunday 6th June 1897 at The Register Office, Ipswich, Suffolk, William a quay labourer, Pleasance a stay hand, both aged 24, single and of 64 Albion Street Ipswich, by certificate, groom's father Thomas Ransome mariner, bride's father Jonathan Hines quay porter, witnesses Jonathan Hines and Jane Tople.^{1,5,8} William and Pleasance had six children; William Charles Ransome 1897-1964; **Frederick Arthur Ransome 1900-1954**; Edith May Ransome 1904-1973; Ernest Stanley Ransome 1906-1991; Thomas George Ransome 1911-1992; and Edward James Ransome 1914-1974.

He appeared on the census of 31st March 1901 on board the SS Sea Gull in St. Katharine's Dock, Stepney, Metropolitan Borough of London (engineer aged 28 married, living with four others, born Ipswich).⁶ William does not appear to be present in the 1911 census, presumably he was away at sea on Sunday 2 April 1911.

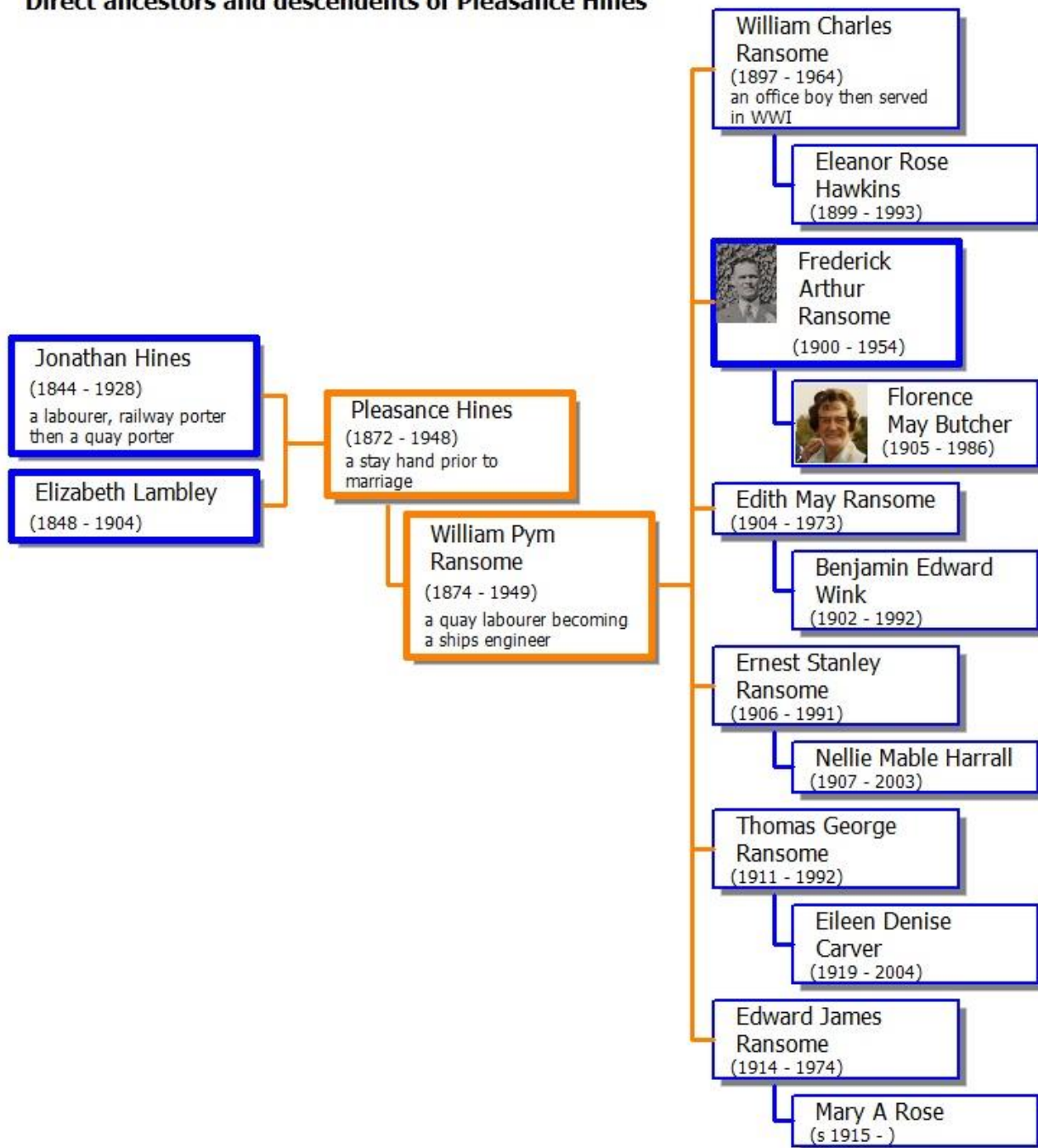
William was widowed on Tuesday 14th September 1948 when Pleasance suddenly died.¹⁰ He had survived his wife by five months when he died on Tuesday 15th February 1949 at 11 Felaw Street, Ipswich, Suffolk, aged 74^{9,11} and was buried on Monday 21st February 1949 in Ipswich, Suffolk, at 3 pm.¹¹

References

1. Steven John Ransome personal communication, Family Tree via email - Jan 2003.
2. England and Wales Birth Index 1837 - 2005, Ipswich 1874 Q3 vol:4a page:623, online at www.ancestry.co.uk and www.findmypast.co.uk.
3. Census 1881, class:RG11 piece:1871 folio:16 page:26, online at www.ancestry.co.uk and www.findmypast.co.uk.
4. Census 1891, class:RG12 piece:1468 folio:71 page:5, online at www.ancestry.co.uk and www.findmypast.co.uk.
5. Marriage Certificate.
6. Census 1901, class:RG13 piece:308 folio:24 page:0, online at www.ancestry.co.uk and www.findmypast.co.uk.
7. FindMyPast British Army Service Records 1760-1915, online at www.findmypast.co.uk.
8. England and Wales Marriage Index 1837 - 2005, Ipswich 1897 Q2 William is vol:3a page:1549, Pleasance is vol:4a page:1549, online at www.ancestry.co.uk and www.findmypast.co.uk.
9. England and Wales Death Index 1837 - 2005, Ipswich 1949 Q1 vol:4b page:939, online at www.ancestry.co.uk and www.findmypast.co.uk.
10. Suffolk Records Office (Ipswich) - Ipswich Evening Star, Thursday 16th September 1948 page:2.
11. Suffolk Records Office (Ipswich) - Ipswich Evening Star, Thursday 17th February 1949 page:2.

Chapter 3 Pleasance Hines 1872 - 1948

Direct ancestors and descendents of Pleasance Hines



Pleasance Hines ^{1,2,3,4,5}

1872 - 1948

Pleasance, mother of Frederick, was a stay hand / worker prior to marriage.^{2,6} She was born about May 1872 in Ipswich, Suffolk^{3,5,4} but no baptism record has been found. Pleasance appeared on the census of 3rd April 1881 at Kents Yard, Church Street, St. Clement, Ipswich, Suffolk (daughter aged 11 single, scholar living with parents and two siblings, born Ipswich, Suffolk)⁵ and on the census of 5th April 1891 at 132 Myrtle Road, St. Clement, Ipswich, Suffolk (boarder aged 18 single, stay worker living with George Sparham and family, born Ipswich, Suffolk).⁶

Pleasance married William Pym Ransome, son of Thomas William Ransome and Mary Ann formerly Leek, on 6th June 1897 at The Register Office, Ipswich, Suffolk, William a quay labourer, Pleasance a stay hand, both aged 24, single and of 64 Albion Street Ipswich, by certificate, groom's father Thomas Ransome mariner, bride's father Jonathan Hines quay porter, witnesses Jonathan Hines and Jane Topple.^{1,2,7} Pleasance and William had six children; William Charles Ransome 1897-1964; **Frederick Arthur Ransome 1900-1954**; Edith May Ransome 1904-1973; Ernest Stanley Ransome 1906-1991; Thomas George Ransome 1911-1992; and Edward James Ransome 1914-1974.

She appeared on the census of 31st March 1901 at 93 Fore Hamlet, St. Clement, Ipswich, Suffolk (wife aged 28 married, living with two children, born Ipswich, Suffolk)³ and on the census of 2nd April 1911 at 9 Felaw Street, Ipswich, Suffolk (wife aged 38 married, living with five children and a niece, born Ipswich, Suffolk, married 13 years, five children all alive).⁸

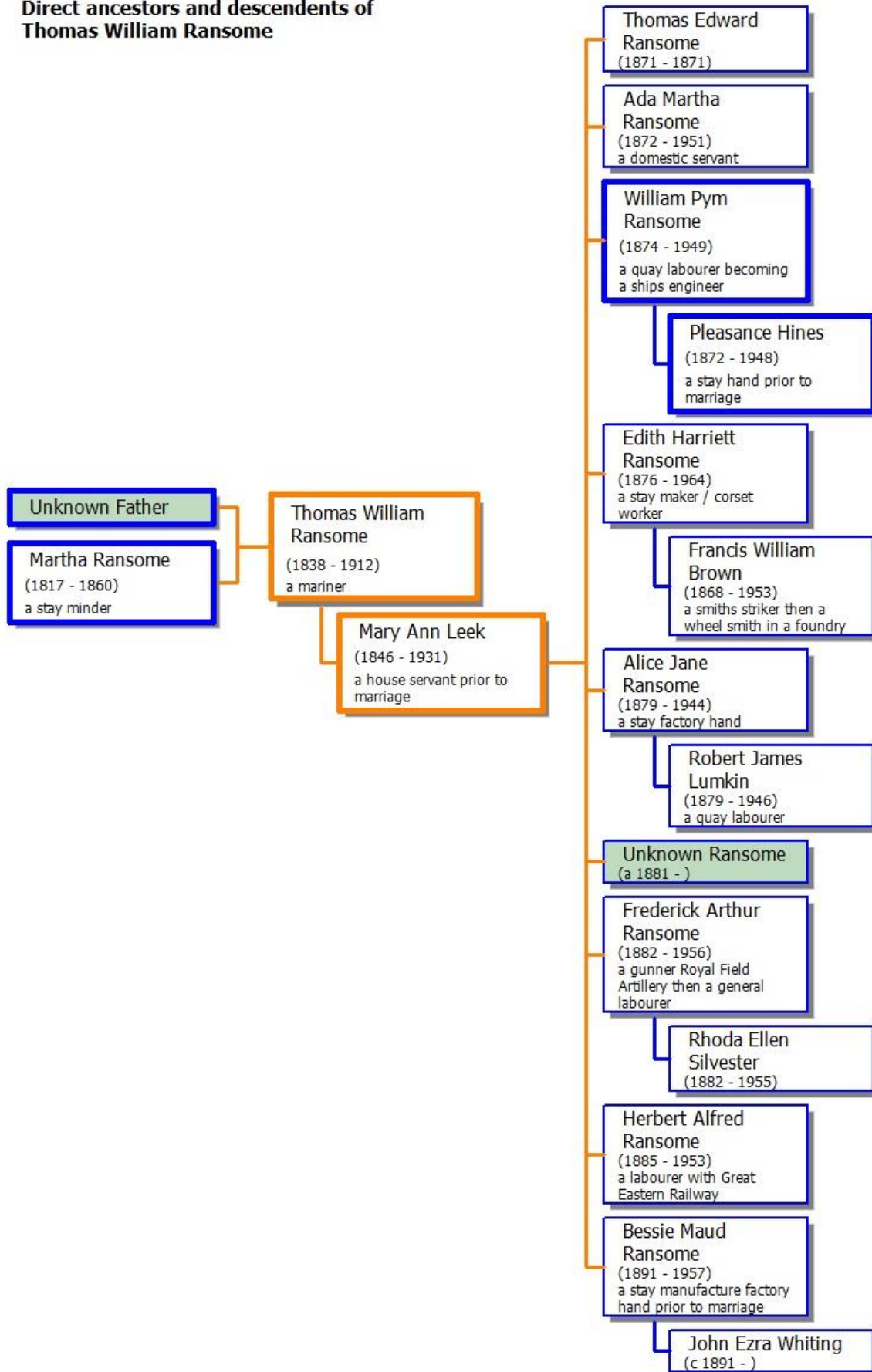
Pleasance suddenly died on Tuesday 14th September 1948 at 11 Felaw Street, Ipswich, Suffolk, aged 76 ^{9,10} and was buried on Saturday 18th September 1948 in Ipswich, Suffolk, at 10:30 am.¹⁰

References

1. Steven John Ransome personal communication, Family Tree via email - Jan 2003.
2. Marriage Certificate.
3. Census 1901, class:RG13 piece:1777 folio:76 page:47, online at www.ancestry.co.uk and www.findmypast.co.uk.
4. England and Wales Birth Index 1837 - 2005, Ipswich 1872 Q2 vol:4a page:654, online at www.ancestry.co.uk and www.findmypast.co.uk.
5. Census 1881, class:RG11 piece:1873 folio:150 page:36, online at www.ancestry.co.uk and www.findmypast.co.uk.
6. Census 1891, class:RG12 piece:1470 folio:92 page:40, online at www.ancestry.co.uk and www.findmypast.co.uk.
7. England and Wales Marriage Index 1837 - 2005, Ipswich 1897 Q2 William is vol:3a page:1549, Pleasance is vol:4a page:1549, online at www.ancestry.co.uk and www.findmypast.co.uk.
8. Census 1911, RG14PN10816 RG78PN584 RD213 SD1 ED18 SN298, online at www.ancestry.co.uk and www.findmypast.co.uk.
9. England and Wales Death Index 1837 - 2005, Ipswich 1948 Q3 vol:4b page:606, online at www.ancestry.co.uk and www.findmypast.co.uk.
10. Suffolk Records Office (Ipswich) - Ipswich Evening Star Thursday 16th September 1948 page:2.

Chapter 4 Thomas William Ransome 1838 - 1912

Direct ancestors and descendents of
Thomas William Ransome



1838 - 1912

Thomas, Frederick's grandfather, was a mariner^{5,6} and he was also known as Thomas Potkins, his step fathers name, between 1841 and 1861⁴ He was born about November 1838 in Wood Dalling, Norfolk^{1,5,6,2,7,8} and baptised on 4th November 1838 in Wood Dalling, Norfolk (illegitimate son of Martha Ransome).³ Thomas appeared on the census of 6th June 1841 at Norton Corner, Wood Dalling, Norfolk (aged 2 as Thos Potkins, living with mother, stepfather and a sister, born in Norfolk)⁴ and on the census of 30th March 1851 in Buckingham Place, St. Margaret, Ipswich, Suffolk (son aged 13 as Thomas Potkins, scholar living with mother, step father and two siblings, born Wood Dalling, Norfolk).⁸

Thomas's employment began in Ipswich, Suffolk, in 1856 signing on as a ships boy on

[illegible]

Dilligence as Thomas
Potkins.⁹

He then appeared on the census of 7th April 1861 in Alert, Havre Dock, Le Havre, Seine-Maritime (aged 23 single as Thomas Potkins, AB Seaman living on board The Alert, a 99 ton brigatine coasting trader, born Ipswich, Suffolk).¹⁰

charged.

Thomas Ransom, one of the crew, corroborated last witness's statements. When the mate (Goebold) asked Mr. Whitehead what they were to do, he was answered that he (Mr. Whitehead) had told the captain to separate the men. The mate then asked for some recompense for what he had done, when Mr. Whitehead said, "If you think you can get anything go and try it."

The Owner, in answer to the Chairman, said that the vessel

On 20th August 1866 Thomas William Ransome was a witness at Ipswich Magistrates, Town Hall, Ipswich, Suffolk, in a case

where a fellow crew man from the *Heroine* was trying to recover unpaid wages.¹¹

Thomas married Mary Ann Leek, daughter of Timothy Leek and Mary formerly Brown, on Wednesday 24th August 1870 at St. Margaret, Ipswich, Suffolk, Thomas a sailor aged 29, Mary aged 24, both single of St. Margarets, by banns, groom's father unknown, bride's father Timothy Leek baker, witnesses Samuel Bird and Jane Birds.^{1,12,13} Thomas and Mary had nine children; Thomas Edward Ransome 1871-1871; Ada Martha Ransome 1872-1951; **William Pym Ransome 1874-1949**; Edith Harriet Ransome 1876-1964; Alice Jane Ransome 1879-1944; Frederick Arthur Ransome 1882-1956; Herbert

Alfred Ransome 1885-1953; Bessie Maud Ransome 1891-1957; and an unknown child who died young.

Thomas appears to be absent from the census of 2nd April 1871, presumably away at sea, as the family was at home. He appeared on the census of 3rd April 1881 at 5 Handford Square, Handford Road, St. Peter, Ipswich, Suffolk (head aged 40 married, sailor living with wife and four children, born Wooddalling, Norfolk)⁶ and on the census of 5th April 1891 at 6 Handford Square, St. Peter, Ipswich, Suffolk (head aged 49 married, mariner living in four rooms with wife and six children, born Ipswich, Suffolk).⁵ Thomas and his entire family appear to be absent from the census of 31st March 1901, whole family away at sea? John Crick and family living in the family home. He then appeared on the census of 2nd April 1911 at 5 Handford Square, Handford Road, St. Peter, Ipswich, Suffolk (head aged 69 married, mariner living in 10? rooms with wife and a daughter, born Wooddallin, Norfolk).²

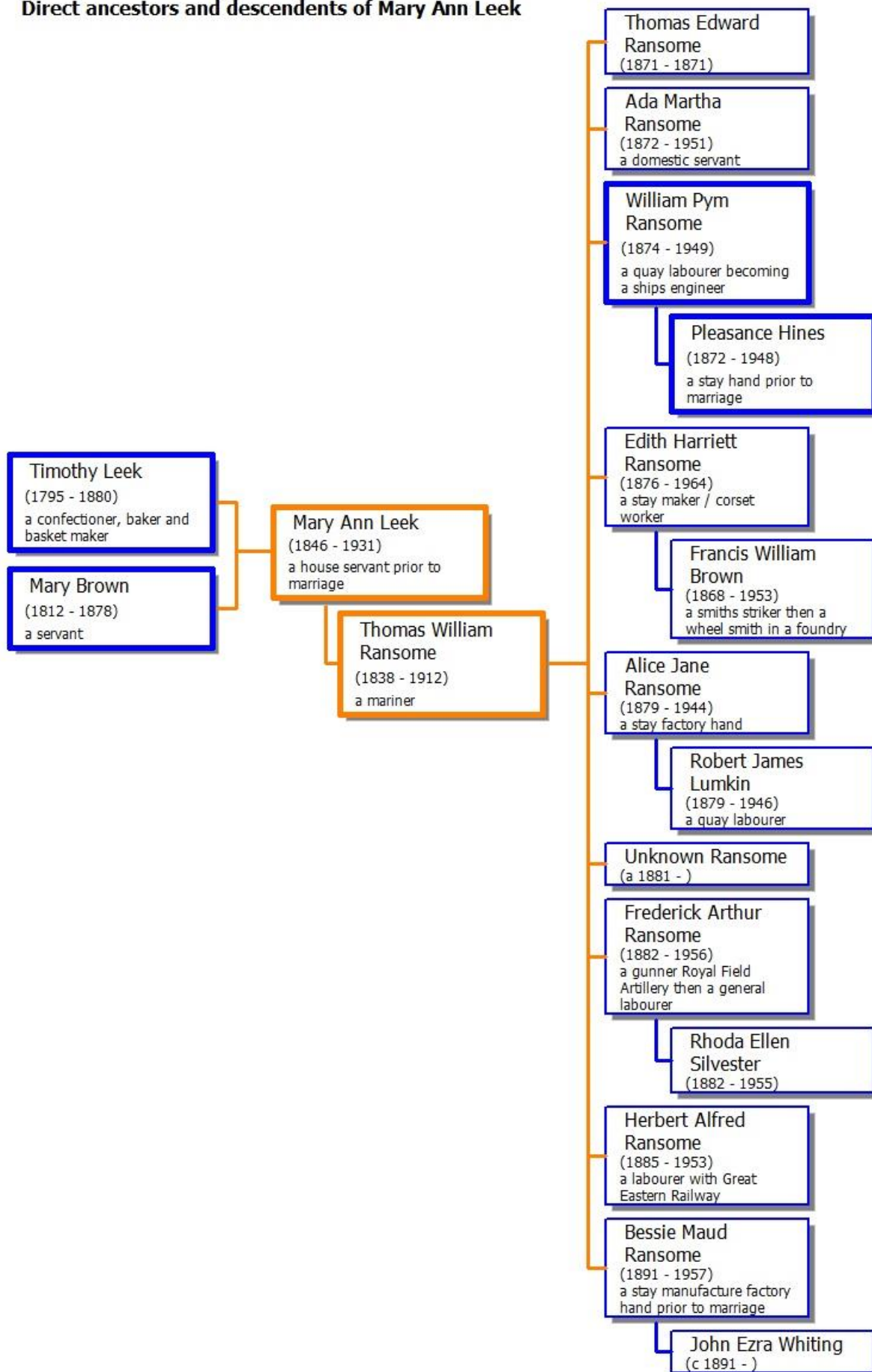
Thomas died about November 1912 in Ipswich, Suffolk, aged 71.¹⁴

References

1. Steven John Ransome personal communication, Family Tree via email - Jan 2003.
2. Census 1911, RG14PN10815 RG78PN584 RD213 SD1 ED17 SN36, online at www.ancestry.co.uk and www.findmypast.co.uk.
3. International Genealogical Index (later FamilySearch), batch:I07384-1 sys:England-EASy film:1596458 ref:item 3-6 p 56, online at www.familysearch.org.
4. Census 1841, class:HO107 piece:764 folio:2A page:3, online at www.ancestry.co.uk and www.findmypast.co.uk.
5. Census 1891, class:RG12 piece:1468 folio:71 page:5, online at www.ancestry.co.uk and www.findmypast.co.uk.
6. Census 1881, class:RG11 piece:1871 folio:16 page:26, online at www.ancestry.co.uk and www.findmypast.co.uk.
7. England and Wales Birth Index 1837 - 2005, Aylsham 1838 Q4 vol:13 page:7, online at www.ancestry.co.uk and www.findmypast.co.uk.
8. Census 1851, class:HO107 piece:1800 folio:614 page:11, online at www.ancestry.co.uk and www.findmypast.co.uk.
9. FindMyPast Merchant Navy Seamen 1835-1941, series:BT116 date:1853-1857 piece:71, online at www.findmypast.co.uk.
10. Census 1861, class:RG09 piece:4462 folio:59 page:1, online at www.ancestry.co.uk and www.findmypast.co.uk.
11. Newspaper article, The Ipswich Journal Saturday 25th August 1866 page:7.
12. England and Wales Marriage Index 1837 - 2005, Ipswich 1870 Q3 vol:4a page:914, online at www.ancestry.co.uk and www.findmypast.co.uk.
13. Marriage Certificate.
14. England and Wales Death Index 1837 - 2005, Ipswich 1912 Q4 vol:4a page:1098, online at www.ancestry.co.uk and www.findmypast.co.uk.

Chapter 5 Mary Ann Leek 1846 - 1931

Direct ancestors and descendents of Mary Ann Leek



Mary Ann Leek^{1,2,3,4}

1846 - 1931

Mary, a grandmother of Frederick, was a house servant prior to marriage.⁵ She was born about May 1846 in Woodbridge, Suffolk, and registered as Mary Leek.^{1,6,7,8,9,10} Mary appeared on the census of 30th March 1851 in Thoroughfare, Woodbridge, Suffolk (daughter aged 5 as M Leek, living with parents, two siblings and a nurse, born Woodbridge, Suffolk)¹⁰ and on the census of 7th April 1861 at the Railway Station Hotel, St. Mary Stoke, Ipswich, Suffolk (aged 16 single as Mary Leks, house servant, born Woodbridge, Suffolk).⁵

Mary married Thomas William Ransome, illegitimate son Martha Ransome, on 24th August 1870 at St. Margaret, Ipswich, Suffolk, Thomas a sailor aged 29, Mary aged 24, both single of St. Margarets, by banns, groom's father unknown, bride's father Timothy Leek Baker, witnesses Samuel Bird and Jane Birds.^{1,2,3} Mary and Thomas had nine children; Thomas Edward Ransome 1871-1871; Ada Martha Ransome 1872-1951; **William Pym Ransome 1874-1949**; Edith Harriet Ransome 1876-1964; Alice Jane Ransome 1879-1944; Frederick Arthur Ransome 1882-1956; Herbert Alfred Ransome 1885-1953; Bessie Maud Ransome 1891-1957; and an unknown child who died young.

Mary appeared on the census of 2nd April 1871 at 3 Johns Court, St. Clement, Ipswich, Suffolk (wife aged 27 married, sailors wife living with a child, born Woodbridge, Suffolk)⁹; on the census of 3rd April 1881 at 5 Handford Square, Handford Road, St. Peter, Ipswich, Suffolk (wife aged 35 married, living with husband and four children, born Woodbridge, Suffolk)⁶ and on the census of 5th April 1891 at 6 Handford Square, St. Peter, Ipswich, Suffolk (wife aged 45 married, living in four rooms with husband and six children, born Woodbridge, Suffolk).⁷ Mary along with the entire family appears to be absent from the census of 31 March 1901, whole family away at sea? John Crick and family living in the family home. She then appeared on the census of 2nd April 1911 at 5 Handford Square, Handford Road, St. Peter, Ipswich, Suffolk (wife aged 65 married, living in 10? rooms with husband and a daughter, born Woodbridge, Suffolk, married 40 years, 9 children, seven still living).¹¹

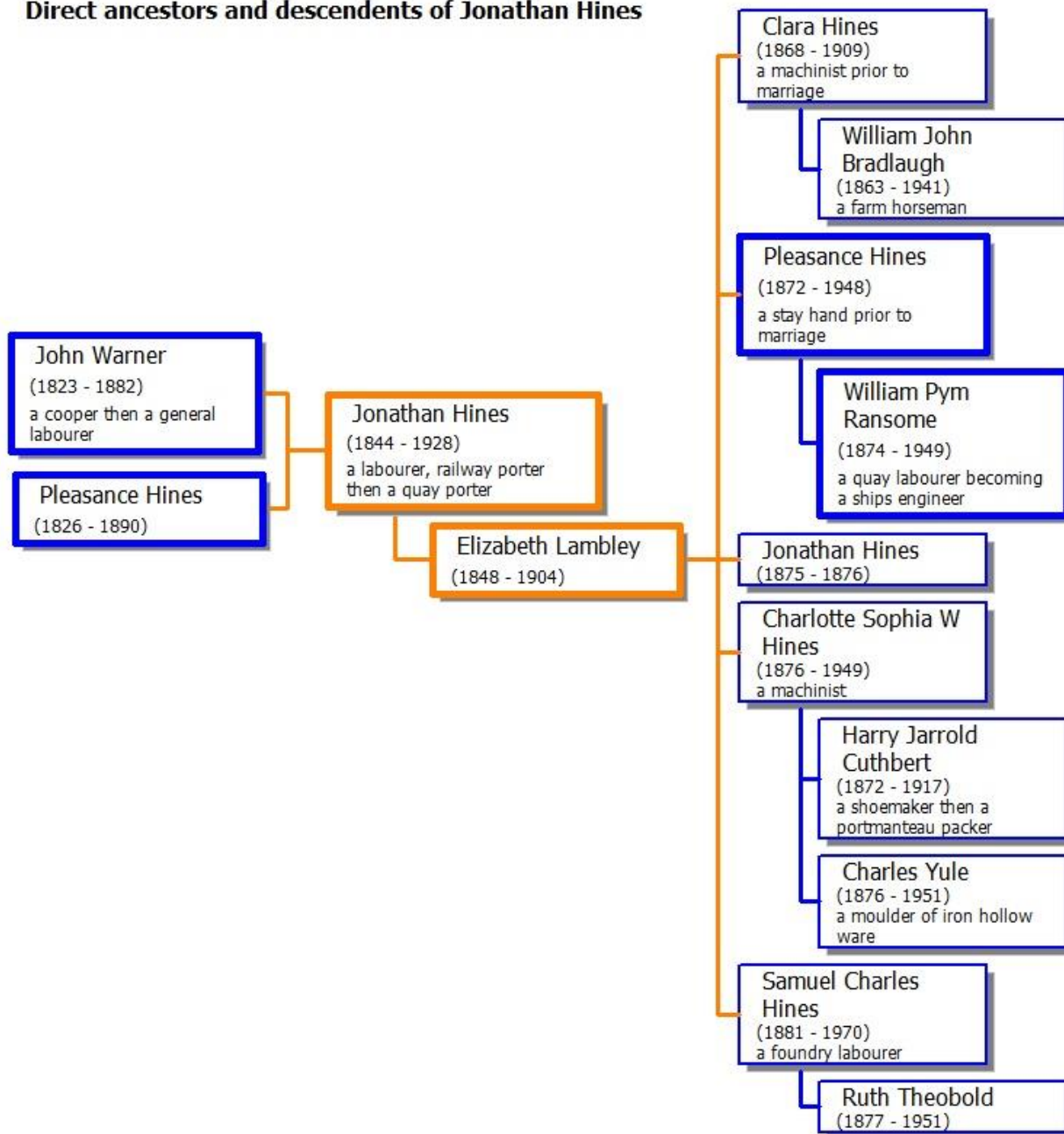
Mary was widowed when her husband Thomas died about November 1912 in Ipswich, Suffolk, aged 71.¹³ Mary died about November 1931 in Ipswich, Suffolk, aged 85.¹²

References

1. Steven John Ransome personal communication, Family Tree via email - Jan 2003.
2. England and Wales Marriage Index 1837 - 2005, Ipswich 1870 Q3 vol:4a page:914, online at www.ancestry.co.uk and www.findmypast.co.uk.
3. Marriage Certificate.
4. England and Wales Marriage Index 1837 - 2005, Woodbridge 1844 Q2 vol:12 page:709, online at www.ancestry.co.uk and www.findmypast.co.uk.
5. Census 1861, class:RG09 piece:1163 folio:40b page:13, online at www.ancestry.co.uk and www.findmypast.co.uk.
6. Census 1881, class:RG11 piece:1871 folio:16 page:26, online at www.ancestry.co.uk and www.findmypast.co.uk.
7. Census 1891, class:RG12 piece:1468 folio:71 page:5, online at www.ancestry.co.uk and www.findmypast.co.uk.
8. England and Wales Birth Index 1837 - 2005, Woodbridge 1846 Q2 vol:12 page:579, online at www.ancestry.co.uk and www.findmypast.co.uk.
9. Census 1871, class:RG10 piece:1754 folio:53 page:1, online at www.ancestry.co.uk and www.findmypast.co.uk.
10. Census 1851, class:HO107 piece:1801 folio:653 page:20, online at www.ancestry.co.uk and www.findmypast.co.uk.
11. Census 1911, RG14PN10815 RG78PN584 RD213 SD1 ED17 SN36, online at www.ancestry.co.uk and www.findmypast.co.uk.
12. England and Wales Death Index 1837 - 2005, Ipswich 1931 Q4 vol:4a page:1091, online at www.ancestry.co.uk and www.findmypast.co.uk.
13. England and Wales Death Index 1837 - 2005, Ipswich 1912 Q4 vol:4a page:1098, online at www.ancestry.co.uk and www.findmypast.co.uk.

Chapter 6 Jonathan Hines 1844 -1928

Direct ancestors and descendents of Jonathan Hines



Jonathan Hines ^{1,2,3,4}

1844 -1928

Jonathan, a grandfather of Frederick, was a labourer, railway porter then a quay porter^{1,5,2,6,7,8} and was also known as Jonathan Warner (his illegitimate father's surname).⁹ He was born about November 1844 in Ipswich, Suffolk^{2,10,7} and baptised on 25th April 1847 at Holy Trinity, Back Hamlet, Ipswich, Suffolk (son of John Warner (cooper) and Pleasance Hines of Fore Street).⁴

Jonathan appeared on the census of 30th March 1851 in Fore Hamlet, St. Clement, Ipswich, Suffolk (son aged 6 as Jonathan Warner, living with parents, born Ipswich, Suffolk)⁹ and on the census of 7th April 1861 in 30 Fore Hamlet, St. Clement, Ipswich, Suffolk (son aged 16 single, labourer living with parents and two siblings, born Ipswich, Suffolk).⁷ He appears to be absent from the census of 2nd April 1871, along with his wife to be and daughter.

Jonathan married Elizabeth Lambley, illegitimate daughter of Mary Ann Lambley, on Sunday 9th April 1871 at The Register Office, Ipswich, Suffolk, Jonathan a labourer aged 22, Elizabeth aged 21, both single of Fore Hamlet Ipswich, by certificate, Jonathan's father John Hines cooper, no father for Elizabeth, witnesses Charles Moyse and Mary Ann Moyse.^{2,11,6} Jonathan and Elizabeth had five children; Clara Hines 1868-1909; **Pleasance Hines 1872-1948**; Jonathan Hines 1875-1876 (assumed parentage); Charlotte Sophia W Hines 1876-1949; and Samuel Charles Hines 1881-1970.

He appeared on the census of 3rd April 1881 in Kents Yard, Church Street, St. Clement, Ipswich, Suffolk (head aged 39 married, porter living with wife and three children, born Ipswich, Suffolk)²; on the census of 5th April 1891 in 8 Cavendish Street, St. Clement, Ipswich, Suffolk (head aged 49 married, porter (railway) living with wife, three children and a grandson, born Ipswich, Suffolk)⁵ and on the census of 31st March 1901 at 99 Fore Hamlet, St. Clement, Ipswich, Suffolk (head aged 57 married, quay labourer living in four rooms with wife, born Ipswich, Suffolk).⁸

Jonathan was widowed when his wife Elizabeth died about May 1904 in Ipswich, Suffolk, aged 50 registered as Elizabeth Canham Hines.¹⁴

He then appeared on the census of 2nd April 1911 at 60 Albion Street, Ipswich, Suffolk (head aged 68 widower, dock labourer living in four rooms with a son, born Ipswich, Suffolk).¹²

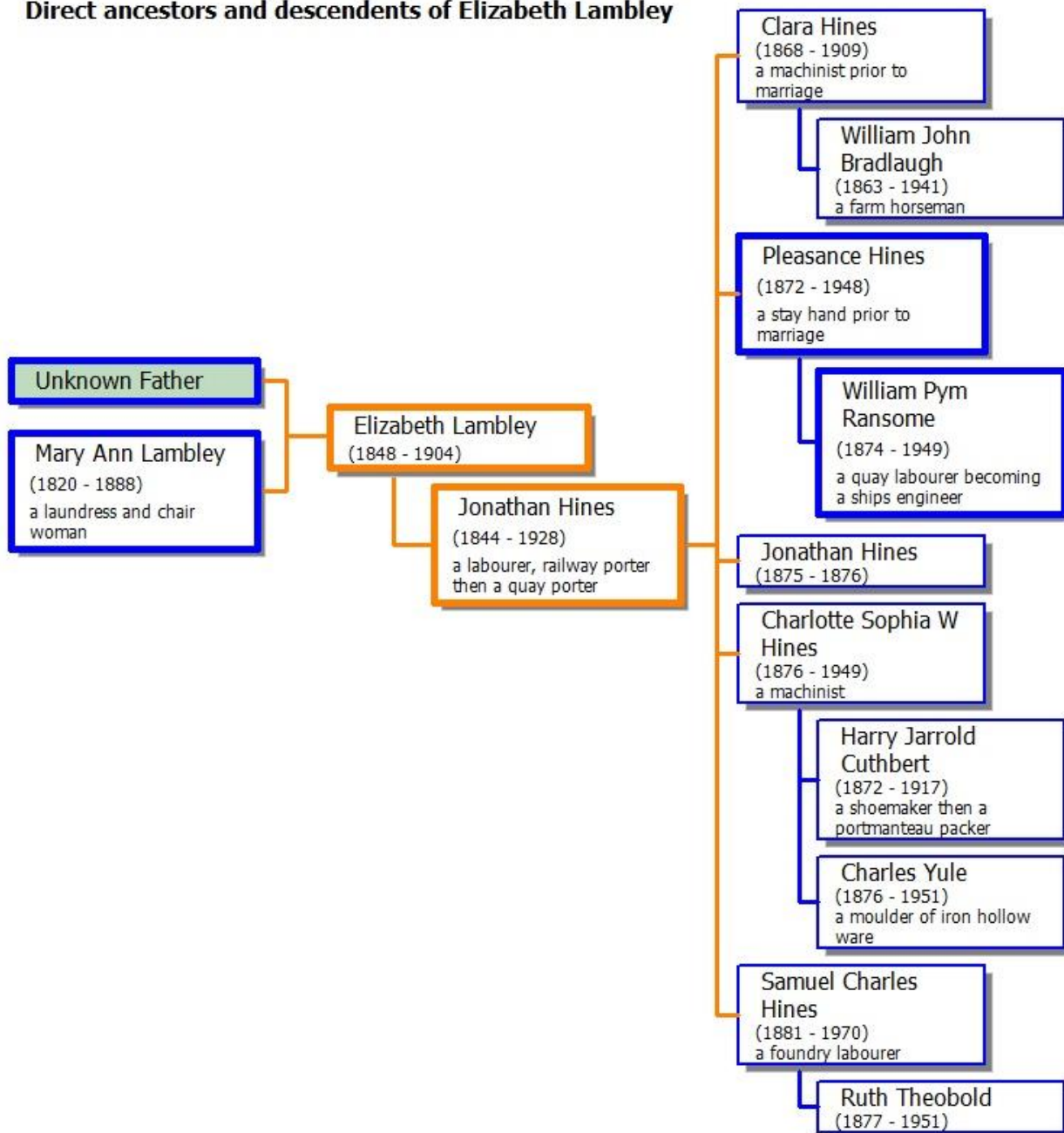
Jonathan died on Wednesday 4th April 1928 at 60 Albion Street, Ipswich, Suffolk, aged 85.^{13,15}

References

1. Marriage Certificate, daughter Pleasance.
2. Census 1881, class:RG11 piece:1873 folio:150 page:36, online at www.ancestry.co.uk and www.findmypast.co.uk.
3. Marriage Certificate, son Jonathan.
4. Suffolk Family History Society Ipswich Baptisms 1813-1900, Suffolk Family History Society CD.
5. Census 1891, class:RG12 piece:1470 folio:131 page:16, online at www.ancestry.co.uk and www.findmypast.co.uk.
6. Marriage Certificate.
7. Census 1861, class:RG09 piece:1164 folio:59 page:13, online at www.ancestry.co.uk and www.findmypast.co.uk.
8. Census 1901, class:RG13 piece:1777 folio:76 page:47, online at www.ancestry.co.uk and www.findmypast.co.uk.
9. Census 1851, class:HO107 piece:1800 folio:86 page:7, online at www.ancestry.co.uk and www.findmypast.co.uk.
10. England and Wales Birth Index 1837 - 2005, Ipswich 1844 Q4 vol:12 page:341, online at www.ancestry.co.uk and www.findmypast.co.uk.
11. England and Wales Marriage Index 1837 - 2005, Ipswich 1871 Q2 vol:4a page:922, online at www.ancestry.co.uk and www.findmypast.co.uk.
12. Census 1911, RG14PN10827 RG78PN585 RD213 SD2 ED2 SN28, online at www.ancestry.co.uk and www.findmypast.co.uk.
13. England and Wales Death Index 1837 - 2005, Ipswich 1928 Q2 vol:4a page:1085, online at www.ancestry.co.uk and www.findmypast.co.uk.
14. England and Wales Death Index 1837 - 2005, Ipswich 1904 Q2 vol:4a page:496, online at www.ancestry.co.uk and www.findmypast.co.uk.
15. Newspaper article, Ipswich Evening Star Saturday 7th April 1928 page:5.

Chapter 7 Elizabeth Lambley 1848 - 1904

Direct ancestors and descendants of Elizabeth Lambley



Elizabeth Lambley^{1,2,3,4}

1848 - 1904

Elizabeth, a grandmother of Frederick, was also known as Betsey⁶ / Betsy Lambly⁴ and as Elizabeth Canham (her step father's surname⁵). She was born on Thursday 28th December 1848 in Short Lane, St. Clement, Ipswich, Suffolk, daughter of Mary Ann Lambley but no father was given on the birth certificate.^{1,6,3}

She appeared on the census of 30th March 1851 in New Street, St. Clement, Ipswich, Suffolk (lodger aged 2 as Betsy, living with mother and a sibling with Robert Goodman and family, born Ipswich Suffolk)⁴ and on the census of 7th April 1861 in Cowper Street, St. Margaret, Ipswich, Suffolk (daughter aged 12 as Elizabeth Canham, scholar living with mother, step father and three siblings, born Ipswich, Suffolk)⁵

Elizabeth married Jonathan Hines, son of John Warner and Pleasance formerly Hines, on 9th April 1871 at The Register Office, Ipswich, Suffolk, Jonathan a labourer aged 22, Elizabeth aged 21, both single of Fore Hamlet Ipswich, by certificate, Jonathan's father John Hines cooper, no father for Elizabeth, witnesses Charles Moyse and Mary Ann Moyse.^{1,2,7} Elizabeth and Jonathan had five children; Clara Hines 1868-1909; **Pleasance Hines 1872-1948**; Jonathan Hines 1875-1876 (assumed parentage); Charlotte Sophia W Hines 1876-1949; and Samuel Charles Hines 1881-1970.

Elizabeth appeared on the census of 3rd April 1881 in Kents Yard, Church Street, St. Clement, Ipswich, Suffolk (wife aged 32 married, living with husband and three children, born Ipswich, Suffolk)¹; on the census of 5th April 1891 at 8 Cavendish Street, St. Clement, Ipswich, Suffolk (wife aged 41 married, living with husband, three children and a grandson, born Ipswich, Suffolk)⁸; and on the census of 31st March 1901 at 99 Fore Hamlet, St. Clement, Ipswich, Suffolk (wife aged 49 married, living in four rooms with husband, born Ipswich, Suffolk).⁹

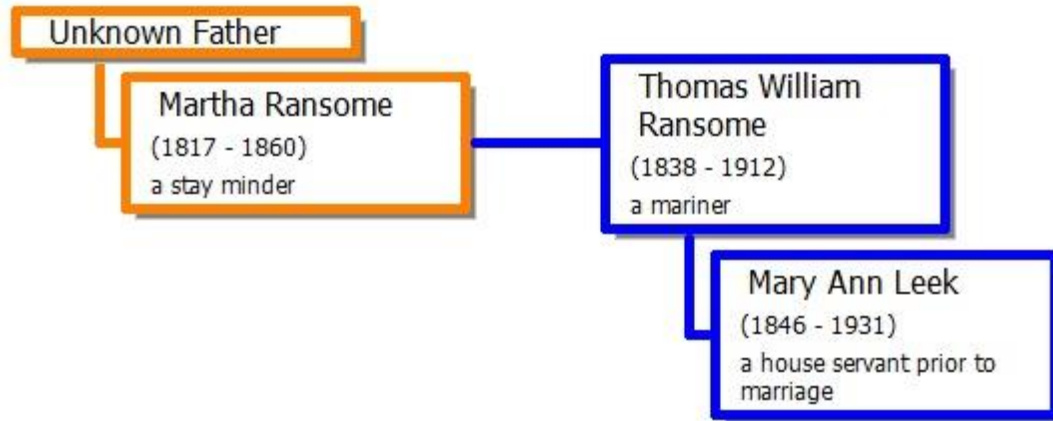
Elizabeth died about May 1904 in Ipswich, Suffolk, aged 50 registered as Elizabeth Canham Hines.¹⁰

References

1. Census 1881, class:RG11 piece:1873 folio:150 page:36, online at www.ancestry.co.uk and www.findmypast.co.uk.
2. England and Wales Marriage Index 1837 - 2005, Ipswich 1871 Q2 vol:4a page:922, online at www.ancestry.co.uk and www.findmypast.co.uk.
3. Birth Certificate.
4. Census 1851, class:HO107 piece:1800 folio:192 page:14, online at www.ancestry.co.uk and www.findmypast.co.uk.
5. Census 1861, class:RG09 piece:1165 folio:27 page:15, online at www.ancestry.co.uk and www.findmypast.co.uk.
6. England and Wales Birth Index 1837 - 2005, Ipswich 1949 Q1 vol:12 page:376, online at www.ancestry.co.uk and www.findmypast.co.uk.
7. Marriage Certificate.
8. Census 1891, class:RG12 piece:1470 folio:131 page:16, online at www.ancestry.co.uk and www.findmypast.co.uk.
9. Census 1901, class:RG12 piece:1470 folio:131 page:16, online at www.ancestry.co.uk and www.findmypast.co.uk.
10. England and Wales Death Index 1837 - 2005, Ipswich 1904 Q2 vol:4a page:496, online at www.ancestry.co.uk and www.findmypast.co.uk.

Chapter 8 Unknown father of Thomas William Ransome

Direct ancestors and descendents of Unknown Father



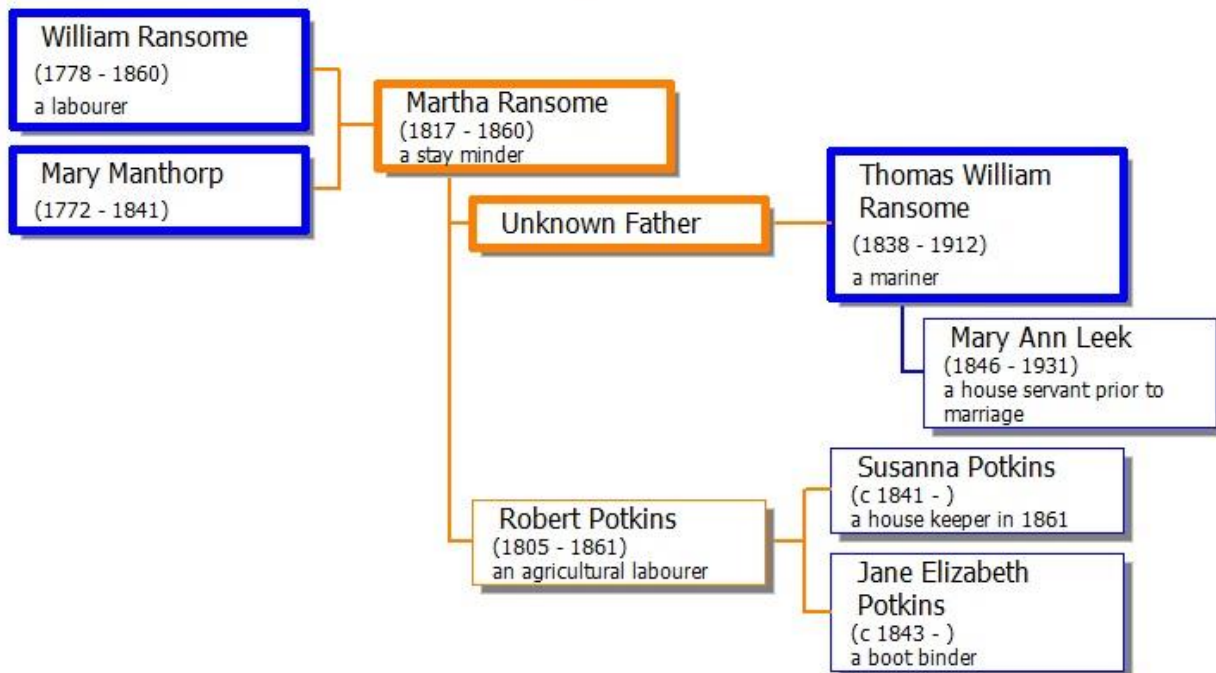
Unknown father of Thomas William Ransome

Great grandfather of Thomas.

At present no details about the father of Thomas William Ransome are known, it is probably unlikely that he will be identified as Thomas was illegitimate. However, bastardy records in Norfolk remain to be checked.

Chapter 9 Martha Ransome c1817 - 1860

Direct ancestors and descendents of Martha Ransome



Martha Ransome ^{1,2}

c1817 - 1860

Martha, a great grandmother of Frederick, was a stay minder.³ She was born about 1817 in Wood Dalling, Norfolk^{2,4,3} and was baptised on 4th October 1818 at St. Andrew, Wood Dalling, Norfolk (daughter of William (labourer) and Mary Ransome).² Martha had an illegitimate son, **Thomas William Ransome**, about November 1838 in Wood Dalling.

Martha married Robert Potkins on 9th April 1840 at St. Andrew, Wood Dalling, Norfolk, Robert as Robert Perkins, groom's father James Perkins, bride's father William Ransome.^{4,5,6} Martha and Robert had two daughters; Susanna Potkins 1841-?; and Jane Elizabeth Potkins 1843-?

Martha appeared on the census of 6th June 1841 at Norton Corner, Wood Dalling, Norfolk (aged 24, living with husband and two children, born in Norfolk).⁴ The family then moved to Ipswich, Suffolk via Wickham Market^{3,9} and she appeared on the census of 30th March 1851 in Buckingham Place, St. Margaret, Ipswich, Suffolk (wife aged 34 married, stay minder living with husband and three children, born Wood Dalling, Norfolk).³

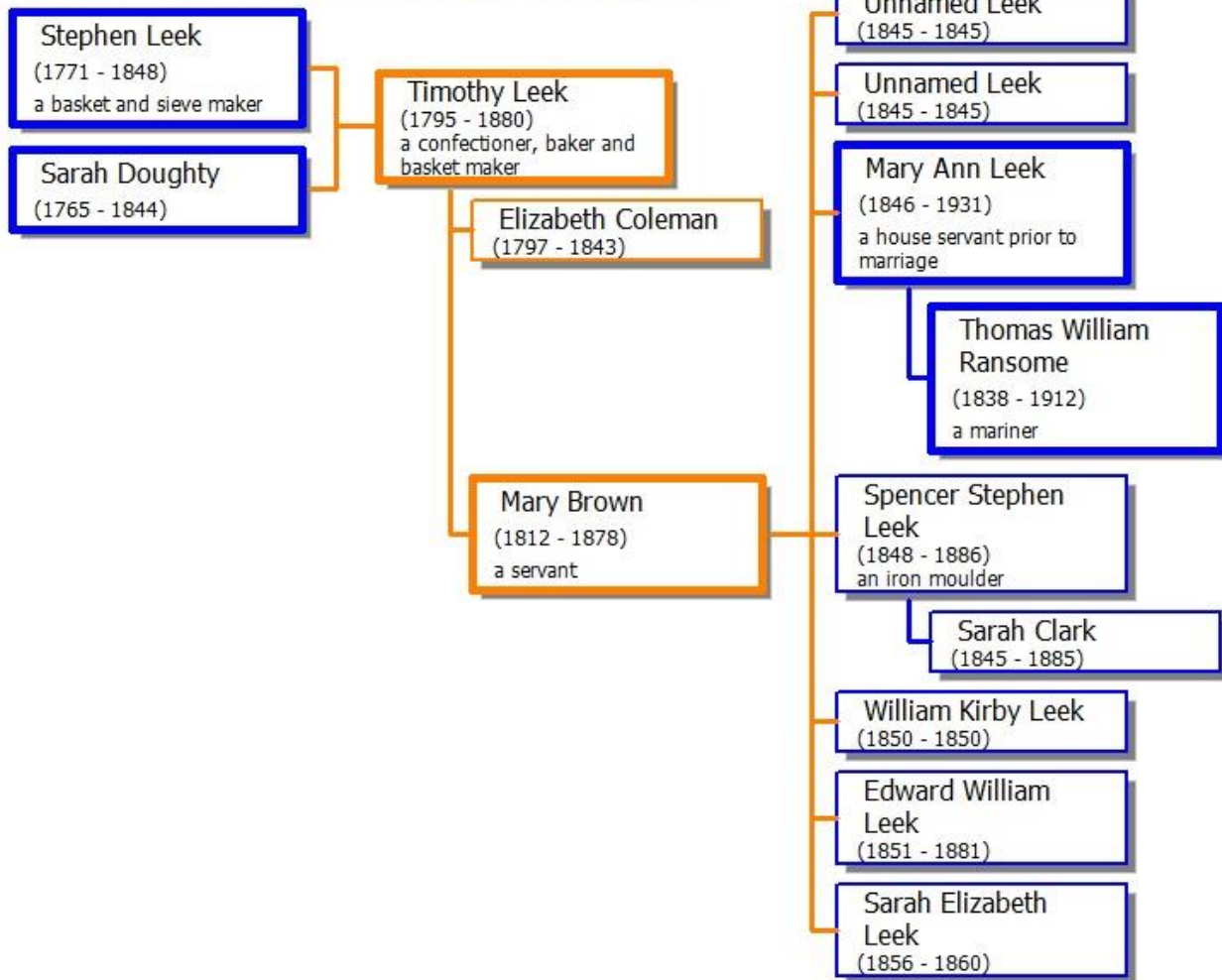
Martha died in September 1860 in Ipswich, Suffolk^{7,8} and was buried on Wednesday 5th September 1860 in Ipswich Cemetery, Belvedere Road, Ipswich, Suffolk, aged 44.⁷

References

1. International Genealogical Index (later FamilySearch), batch:I07384-1 sys:England-EASy film:1596458 ref:item 3-6 p 56, online at www.familysearch.org.
2. Norfolk Baptism Project, Wood Dalling St. Andrew entry:78, online at www.freepages.genealogy.rootsweb.ancestry.com/~tinstaafl.
3. Census 1851, class:HO107 piece:1800 folio:614 page:11, online at www.ancestry.co.uk and www.findmypast.co.uk.
4. Census 1841, class:HO107 piece:764 folio:2A page:3, online at www.ancestry.co.uk and www.findmypast.co.uk.
5. England and Wales Marriage Index 1837 - 2005, Aylsham 1840 Q2 vol:13 page:31, online at www.ancestry.co.uk and www.findmypast.co.uk.
6. International Genealogical Index (later FamilySearch), batch:I07384-1 sys:England-EASy film:1596458 ref:item 3-6 p 4, online at www.familysearch.org.
7. National Burial Index for England & Wales v.3, CD-ROM from The Federation of Family History Societies, 2010.
8. England and Wales Death Index 1837 - 2005, Ipswich 1860 Q3 vol:4a page:200, online at www.ancestry.co.uk and www.findmypast.co.uk.
9. England and Wales Birth Index 1837 - 2005, Plomesgate 1843 Q3 vol:12 page:373, online at www.ancestry.co.uk and www.findmypast.co.uk.

Chapter 10 Timothy Leek c1795 - 1880

Direct ancestors and descendents of Timothy Leek



Timothy Leek ^{1,2} (Leake⁵ or Leeke⁹)

c1795 - 1880

Timothy, a great grandfather of Frederick, was a confectioner, baker and basket maker.^{3,4,5,6,7,8,9,10,11} He was born about 1795 in Framlingham, Suffolk^{4,5,12,6,2} and baptised on 19th November 1795 at St. Michael, Framlingham, Suffolk (son of Stephen Leek and Sarah his wife late Doughty, private baptism).²

Timothy married Elizabeth Coleman, details of parents currently unknown, on Tuesday 15th June 1819 in Helmingham, Suffolk, Timothy Leek of St. Matthew Ipswich.^{13,14} Timothy and Elizabeth did not appear to have any children.

**TO THE HIGH SHERIFF
OF THE COUNTY OF SUFFOLK.**

WE, the undersigned, do hereby request you to call a Meeting of the Freeholders and Inhabitants of the County of Suffolk, for the purpose of considering the best means to be adopted for the support of his Majesty's Ministers in their exertions to accomplish a full and effectual Reform in the Representation of the People in Parliament.

Grafton	W. P. Hunt	James Gaye	J. M. M ^r Leroth
Norfolk, E. M.	Robt. Skeet	John Poulter	John Pace
Gosford	S. Steggall	Chas. Rumbelow	Samuel Fennell
Acheson	J. G. Conder	James Booty	Samuel Ridley
Huntingfield	John Hayward	Robt. Knight	John Watson
Robt. Harland	Thos. Flory	Wm. Poulter	Alfred Cole
Hen. E. Bunbury	Charles Poppy	John W. Moore	William Modlin
Wm. Rowley	James Last	H. Coates	William Sale
Chas. Tyrell	F. Buttrum	H. R. Wells	Robert Harvey
Chas. A. FitzRoy	James Gedney	Jas. Death	Robert Hayward
John Mosson	John Flindall	Wm. Hunter	James High

On 9th November 1831 Timothy Leek and his brother Spencer Leek signed a petition to the High Sheriff of Suffolk calling for meeting to discuss the best means for the government to improve representation of the people.¹⁵ Timothy then appeared on the census of 6th June 1841 in Thoroughfare, Woodbridge, Suffolk (aged 43, confectioner living with wife, a niece Maria Leek and Ann Blomfield, born Suffolk).⁷ In March 1843 two pieces of Church Charity land currently occupied by Timothy Leek, Jenner's Dole in Melton, Suffolk, were put up for rent.¹⁶

**MELTON
Church and Charity Lands.**

TO BE LET BY TENDER,
For the term of 14 years, with possession at Michaelmas next,

THE Property hereinafter mentioned, situate at Melton, Suffolk, in the following Lots:—

CHARITY LANDS.

Lot 1. Two pieces of Arable LAND, called "Stony Lands," containing 14A. 1R. 26r., now occupied by Geo. Smyth.

Lot 2. A COTTAGE and small piece of Arable LAND, called "Burnthouse Piece," occupied by James Ruth; together with Two COTTAGES in Water Lane, occupied by Hawes and others, containing together 2R. 20r.

Lot 3. Four new Brick-built COTTAGES, occupied by Took, Pettitt, and others, with 2 pieces of LAND, called "Jenner's Dole," occupied by Timothy Leek, containing together 2A. 1R. 12r.

CHURCH LANDS.

Lot 4. A COTTAGE in Melton Street, and 2 pieces of

22nd inst., at Woodbridge, after a severe illness, Elizabeth, wife of Mr. Timothy Leek, confectioner and basket maker, Thoroughfare, aged 46.
22nd inst. at Yarmouth. Sarah Elizabeth, the wife of

Timothy was widowed when his wife Elizabeth died on Wednesday 22nd November 1843 in

Woodbridge, Suffolk, after a severe illness, wife of Timothy Leek confectioner and basket maker of Thoroughfare, aged 46.^{21,22,23} She was buried on Sunday 26 November 1843 in All Saints, Wickham Market, Suffolk, aged 46.²²

night's solitary confinement.

ROBBERY BY A NURSE.

Martha Turner, 22, who surrendered to take her trial having been admitted to bail, and who appeared at the bar rather fashionably dressed in black with a sable bon, wearing also a necklace composed alternately of black beads and mock pearls, was charged with having stolen a silk-shawl, a pair of shoes, a piece of silk velvet, a quantity of sable fur, and a long catalogue of other articles, consisting of stockings, night-gowns, silk-handkerchiefs, ribbons, and things suitable for female attire, from the premises of Mr. Timothy Leek, of Woodbridge.

Mr. Rouse appeared for the prosecution. The prosecutor is a confectioner and basket-maker. In October last his wife was taken ill, and the prisoner was employed as nurse, in which capacity she continued for seven or eight weeks, until Mrs. Leek's death, which took place about the latter end of November. The mother of the prisoner was also employed as nurse, and both had access to all parts of the house. The prisoner was hired by Mr. Leeks, who swore that he made the bargain, and paid the prisoner the whole of her wages, up to the time when she was

A nurse, Martha Turner, had been appointed to look after Timothy's ailing wife, but on 13th February 1844 Timothy Leek prosecuted her at Woodbridge Magistrates where she was sentenced to nine months imprisonment, first and last weeks in solitary, for stealing a silver spoon, pair of shoes, shawl etc from Timothy.^{17,18}

Timothy married Mary Brown, daughter of John Brown and Mary possibly formerly Byles, about May 1844 at St. Edmund, Bromeswell, Suffolk, Timothy a widowed confectioner of Woodbridge, Mary single of Bromeswell, both of full age, by licence, groom's father Stephen Leek basket maker, bride's father John Brown dealer, witnesses Spencer Leek and Susan Leek.^{19,19} Timothy and Mary had seven children; twin daughters who were

aged 70, Ann and Charles Woodbridge, 19th inst., at Woodbridge, the infant twin daughters of Mr. Timothy Leek.

unnamed and seemed to die soon after birth on 19th February 1845¹⁸; **Mary**

Ann Leek 1846-1931; Spencer Steven Leek 1848-1886; William Kirby Leek 1850-1850; Edward William Leek 1851-1881; and Sarah Elizabeth Leek 1856-1860.

At Melton, And Thoroughfare, Woodbridge.

To be SOLD by AUCTION, By Mr. PIZEY, On Thursday and Friday next, the 2nd & 3rd Sept., 1847: First Day, at Melton, at 12 o'clock: Second Day, upon the Premises, Thoroughfare, Woodbridge, at half-past 10 o'clock: By order of the Assignees under a Fiat in Bankruptcy, THE ENTIRE STOCK in TRADE, excellent HOUSEHOLD FURNITURE, GROWING CROPS of OZIERs, CARROTS, SWEDE TURNIPS, and BEET, and other Effects, of

Mr. TIMOTHY LEEK, Basket Maker; COMPRISING, FIRST DAY, AT MELTON—A capital Stack of Upland Hay, Stack of Oat Straw, 350 Bundles of White Rods, 150 Brown ditto, Hay Cart, handsome square Luggage ditto (good as new), capital 4-load Tumbril ditto, quantity of Muck, ditto of Ozier Peelings; the Growing Crops of 8 Acres of Willows and Oziers, 12 Acres of Beet, 2 of an Acre of Carrots, small Piece of Swedes; capital Barn and Outbuildings, at Melton, to be pulled down and cleared off the Premises by the 11th of October, 1847. Also, 7 Acres of Willows and Oziers, at Martlesham.

SECOND DAY, AT WOODBRIDGE—Comprises a large quantity of harness, sieves, baskets, wood shovels, nests of drawers, shop counter and fittings, glass case with sliding doors, writing desk, &c. Capital mahogany dining, loo, and other tables; handsome bureau, carpets & rugs, chimney & other glasses, cut glass, tea service; superior 8-day clock, in mahogany case; sets of chairs, sofas, superior 4-post bedsteads and furniture, featherbeds and bedding, chests with drawers, wash tables and contents, kitchen and culinary requisites, and out-door effects.

Catalogues may be had of the Auctioneer, and at the Place of Sale, Woodbridge.

Following bankruptcy, Timothy's property was sold on 1st September 1847 at Melton, Suffolk, and included household and business goods and 17.5 acres of land. A second sale took place the following day in Woodbridge.²⁰

He appeared on the census of 30th March 1851 in Thoroughfare, Woodbridge, Suffolk (head aged 50 married, confectioner living with wife, three children and a nurse, born Framlingham, Suffolk)⁴; on the census of 7th April 1861 in Turret Lane, St. Mary at the Quay, Ipswich, Suffolk (head aged 63 married as Timothy Leake, baker

living with wife and two children, born Framlingham, Suffolk)⁵; and on the census of 2nd April 1871 in Wickham Market, Suffolk (head aged 74 married, confectioner living with wife and a son, born Framlingham, Suffolk).⁶

He was widowed a second time when Mary died in September 1878 in Suffolk^{22,24} and was buried on Wednesday 25th September 1878 at All Saints, Wickham Market, Suffolk, aged 66.²²

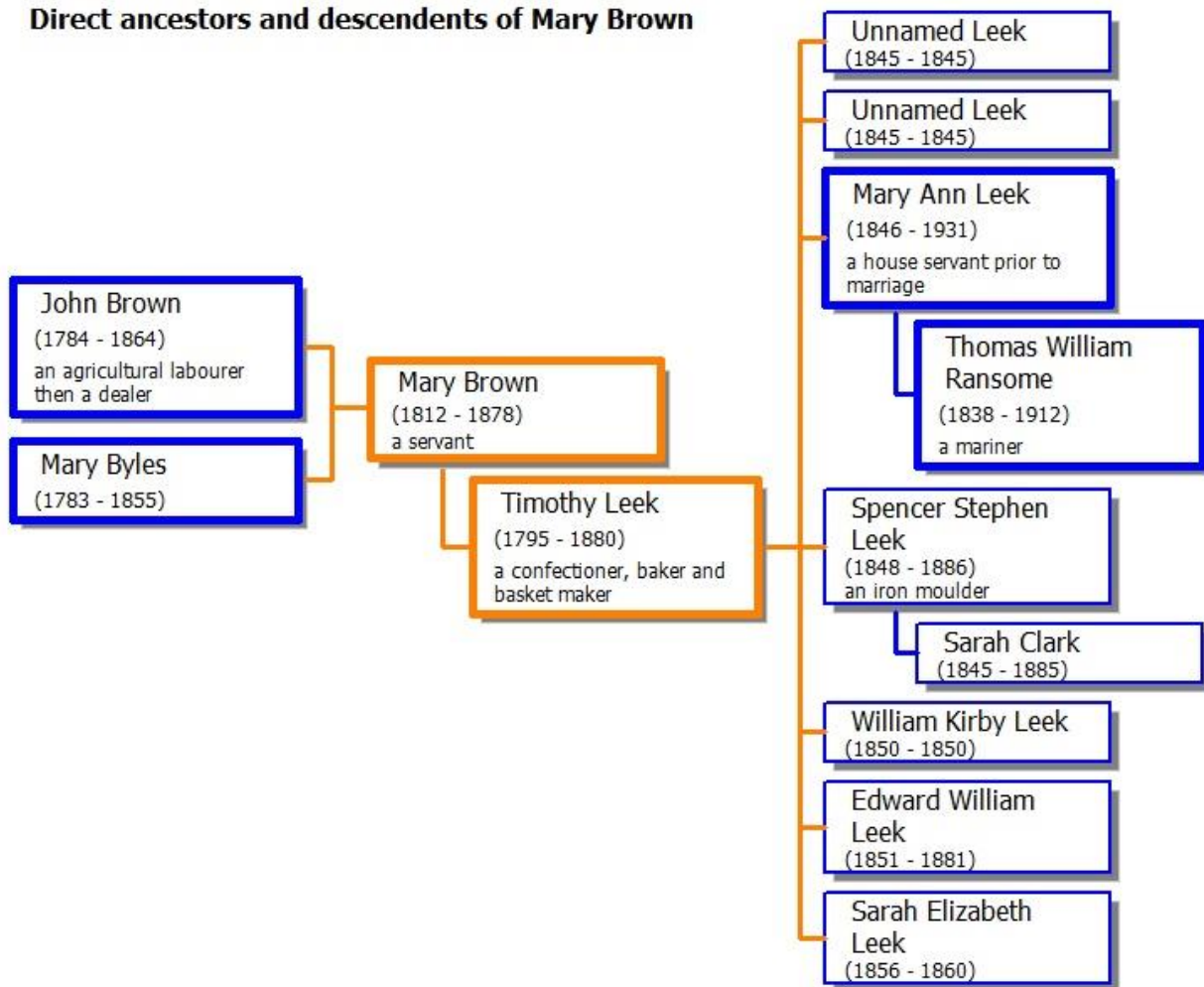
Timothy died about May 1880 in Suffolk aged 84.¹²

References

1. Marriage Certificate.
2. Suffolk Family History Society Framlingham St Michael, Baptisms 1718-1841 page:135, Suffolk Family History Society CD.
3. Marriage Certificate, daughter Mary Ann.
4. Census 1851, class:HO107 piece:1801 folio:653 page:20, online at www.ancestry.co.uk and www.findmypast.co.uk.
5. Census 1861, class:RG09 piece:1164 folio:22 page:7, online at www.ancestry.co.uk and www.findmypast.co.uk.
6. Census 1871, class:RG10 piece:1763 folio:122 page:20, online at www.ancestry.co.uk and www.findmypast.co.uk.
7. Census 1841, class:HO107 piece:1028 folio:55 page:28, online at www.ancestry.co.uk and www.findmypast.co.uk.
8. Suffolk Records Office (Ipswich) - Parish Records, Woodbridge St. John fiche:1 of 11.
9. Suffolk Records Office (Ipswich) - Parish Records, Bromeswell St. Edmund fiche:7 of 8.
10. Suffolk Family History Society Ipswich Baptisms 1813-1900, Suffolk Family History Society CD.
11. Newspaper article, The Ipswich Journal Saturday 28 November 1843 page:3.
12. England and Wales Death Index 1837 - 2005, Plomesgate 1880 Q2 vol:4a page:447, online at www.ancestry.co.uk and www.findmypast.co.uk.
13. Suffolk Marriage Index 1813 - 1837, Suffolk Family History Society, 1992 - 2005, vol:11 page:42.
14. International Genealogical Index (later FamilySearch), batch:M13164-1 sys:England-ODM film:918502, online at www.familysearch.org.
15. Newspaper article, The Bury and Norwich Post Wednesday 9 November 1831 page:1.
16. Newspaper article, The Ipswich Journal Saturday 18 March 1843 page:2.
17. Newspaper article, The Bury and Norwich Post Wednesday 22 March 1844 page:2.
18. Newspaper article, The Ipswich Journal Saturday 25 February 1845 page:3.
19. England and Wales Marriage Index 1837 - 2005, Woodbridge 1844 Q2 vol:12 page:709, online at www.ancestry.co.uk and www.findmypast.co.uk.
20. Newspaper article, The Ipswich Journal Saturday 28 August 1847 page:2.
21. England and Wales Death Index 1837 - 2005, Woodbridge vol:12 page:329, online at www.ancestry.co.uk and www.findmypast.co.uk.
22. National Burial Index for England & Wales v.3, CD-ROM from The Federation of Family History Societies, 2010.
23. Newspaper article, The Ipswich Journal Saturday 28 November 1843 page:3.
24. England and Wales Death Index 1837 - 2005, Plomesgate 1878 Q3 vol:4a page:450, online at www.ancestry.co.uk and www.findmypast.co.uk.

Chapter 11 Mary Ann Brown 1812 - 1878

Direct ancestors and descendents of Mary Brown



Mary Ann Brown ^{1,2}

c1812 - 1878

Mary, a great grandmother of Frederick, was a servant prior to marriage.⁶ She was possibly born on 27th December 1812 in Ipswich, Suffolk^{3,4,5,10}, and baptised at St. Peter, Ipswich, Suffolk on the same day, daughter of John Brown² and Mary late Byles.^{10,12} She appeared on the census of 6th June 1841 in Bromeswell, Suffolk (aged 25, female servant living with Robert and Elizabeth Parker, publican, and Ann Holder, born Suffolk).⁶

Ipswich Gazette.
UNMANLY ASSAULT.—On Thursday last, a young fellow named Joseph Frost, was charged before the magistrates at the Town Hall, Ipswich, with an assault upon Mary Ann Brown. The defendant pleaded guilty, but alleged that he had "sufficient provocation." The facts were these:—On Sunday night, about six o'clock, the complainant, on her way to Trinity Church, met the defendant and a companion of his, in the Fore Hamlet. As she passed, she bade the defendant "good night," but, calling him back, asked him, "what he had been saying about her?" and attempted to imprint her finger nails upon his face. He immediately struck her a tremendous blow on the face, which knocked out three of her teeth, and filled her mouth with blood. As the complainant would not be entitled to any part of the fine, the magistrates recommended the parties to retire, to allow the defendant to make the complainant a pecuniary compensation. This however failed, as the defendant objected to pay any costs, alleging he would "rather go to gaol." The magistrates expressed their regret that the defendant had not exercised a proper feeling in the matter, as it was a most aggravated and unmanly assault upon a female, admitting of no justification. He was accordingly fined 10s. and costs, or 14 days imprisonment; and was committed in default.

It is possible that on 11th January 1844 Mary was a witness at Ipswich Magistrates, Town Hall, Ipswich, Suffolk, where Joseph Frost admitted assaulting her, he went to prison for 14 days rather than pay her compensation or a fine.¹¹

Mary married Timothy Leek, son of Stephen Leek and Sarah formerly Doughty, on 2nd May 1844 at St. Edmund, Bromeswell, Suffolk, Timothy

a widowed confectioner of Woodbridge, Mary single of Bromeswell, both of full age, by licence, groom's father Stephen Leek basket maker, bride's father John Brown dealer, witnesses Spencer Leek and Susan Leek.^{1,2,7} Mary and Timothy had seven children; twin

Ipswich Gazette.
19th inst., at Woodbridge, the infant twin daughters of Mr. Timothy Leek.

daughters who were unnamed and seemed to die soon after birth on 19th

February 1845¹⁸; **Mary Ann Leek 1846-1931**; Spencer Steven Leek 1848-1886; William Kirby Leek 1850-1850; Edward William Leek 1851-1881; and Sarah Elizabeth Leek 1856-1860.

Mary appeared on the census of 30th March 1851 in Thoroughfare, Woodbridge, Suffolk (wife aged 38 married as M Leek, living with husband, three children and a nurse, born Ipswich, Suffolk)³; on the census of 7th April 1861 in Turret Lane, St. Mary at the Quay, Ipswich, Suffolk (wife aged 48 married as Mary Leake, living with husband and two children, born Ipswich, Suffolk)⁴; and on the census of 2nd April 1871 in Wickham Market, Suffolk (wife aged 60 married, living with husband and a son, born Ipswich, Suffolk).⁵

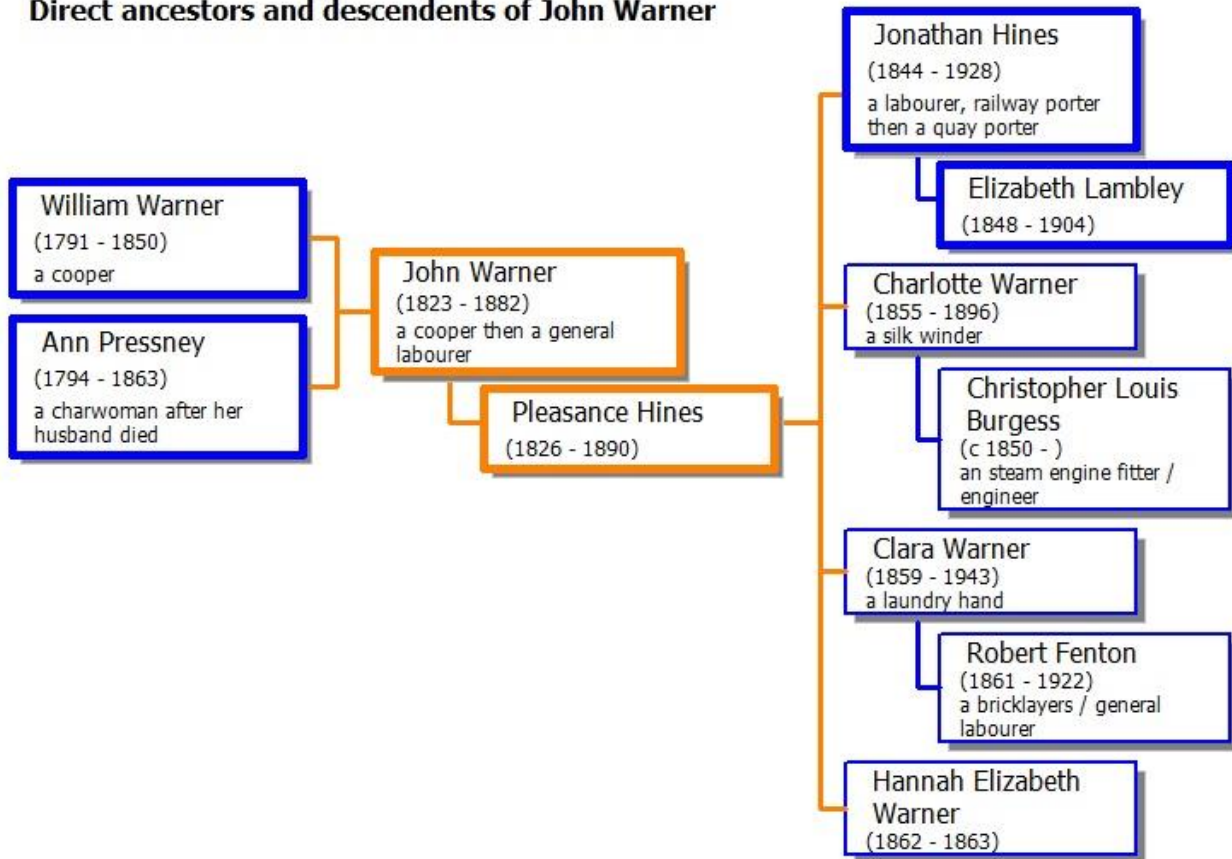
Mary died in September 1878 in Suffolk⁸ and was buried on Wednesday 25th September 1878 at All Saints, Wickham Market, Suffolk, aged 66.⁹

References

1. England and Wales Marriage Index 1837 - 2005, Woodbridge 1844 Q2 vol:12 page:709, online at www.ancestry.co.uk and www.findmypast.co.uk.
2. Marriage Certificate.
3. Census 1851, class:HO107 piece:1801 folio:653 page:20, online at www.ancestry.co.uk and www.findmypast.co.uk.
4. Census 1861, class:RG09 piece:1164 folio:22 page:7, online at www.ancestry.co.uk and www.findmypast.co.uk.
5. Census 1871, class:RG10 piece:1763 folio:122 page:20, online at www.ancestry.co.uk and www.findmypast.co.uk.
6. Census 1841, class:HO107 piece:1041 folio:3 page:1, online at www.ancestry.co.uk and www.findmypast.co.uk.
7. Suffolk Records Office (Ipswich) - Parish Records, Bromeswell St. Edmund fiche:7 of 8.
8. England and Wales Death Index 1837 - 2005, Plomesgate 1878 Q3 vol:4a page:450, online at www.ancestry.co.uk and www.findmypast.co.uk.
9. National Burial Index for England & Wales v.3, CD-ROM from The Federation of Family History Societies, 2010.
10. Suffolk Family History Society Ipswich Baptisms 1754-1812, Suffolk Family History Society CD.
11. Newspaper article, The Ipswich Journal Saturday 13 January 1844 page:2.
12. Suffolk Records Office (Ipswich) - Parish Records, Ipswich St. Peter fiche:22 of 49

Chapter 12 John Warner c1823 - 1882

Direct ancestors and descendents of John Warner



John Warner ^{1,2,3}

c1823 - 1882

John, a great grandfather of Frederick, was a cooper then a general labourer.^{1,3,4,5,6} He was born about 1823 in Ipswich, Suffolk^{4,5,2} and was baptised on 23rd September 1823 at St. Clement, Ipswich, Suffolk (son of William Warner (cooper) and Ann of Fore Hamlet).² He appeared on the census of 6th June 1841 in Long Lane, St. Clement, Ipswich, Suffolk (aged 15, cooper living with parents, born Suffolk).³

John and Pleasance Hines (daughter of Jonathan Hines and Pleasance formerly Smith) had a son, Jonathan in 1844, and married about May 1847 in Ipswich, Suffolk.^{2,7} In total they had four children; **Jonathan Hines 1844-1928**; Charlotte Warner 1855-1896; Clara Warner 1859-1943; and Anna Elizabeth Warner c1862-1863.

John appeared on the census of 30th March 1851 in Fore Hamlet, St. Clement, Ipswich, Suffolk (head aged 26 married, cooper living with wife and a son, born Ipswich, Suffolk)⁴; on the census of 7th April 1861 at 30 Fore Hamlet, St. Clement, Ipswich, Suffolk (head aged 38 married, cooper living with wife and three children, born Ipswich, Suffolk)⁵; and on the census of 2nd April 1871 at 40 Fore Hamlet, Trinity, Ipswich, Suffolk (head aged 45 married, cooper living with wife and two children, born Ipswich, Suffolk).⁸

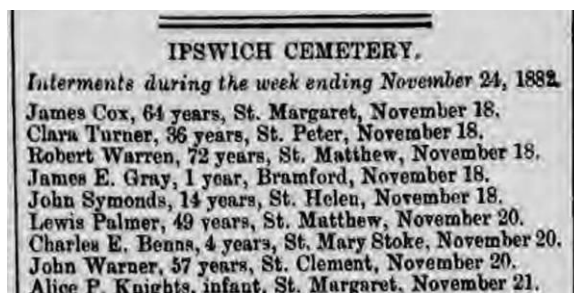
they could berth to load with shingle.
John Warner, labourer, deposed that he was often engaged in loading vessels with shingle from the beach. The examination of this witness caused some amusement in Court by fixing the dates when events occurred by certain domestic events of an "interesting" nature. The witness stated that he could neither read nor write, and could not understand a plan even if it was explained to him, but he had sworn an affidavit in which the places where various vessels were loaded were fixed. During the hearing of the action his Lordship made some observations on the unsatisfactory nature of the affidavit evidence.
Charles Frost, master mariner, Felixstowe, deposed

On 13 May 1879 John Warner was a witness at the High Court of Justice, London, for an appeal about loading ships with shingle from the beach near Felixstowe Ferry exposing land to flooding. (Cannot be certain it was this John

Warner, but fairly confident as no others lived near there at that time).⁹

He then appeared on the census of 3rd April 1881 at 4 Short Lane, St. Clement, Ipswich, Suffolk (head aged 55 married, general labourer living with wife and a daughter, born St. Clement, Ipswich, Suffolk).⁶

John died in November 1882 in Ipswich, Suffolk^{10,11,12} and was buried on Monday 20th November 1882 in Ipswich Cemetery, Belvedere Road, Ipswich, Suffolk, aged 57 of St. Clements.^{11,12}

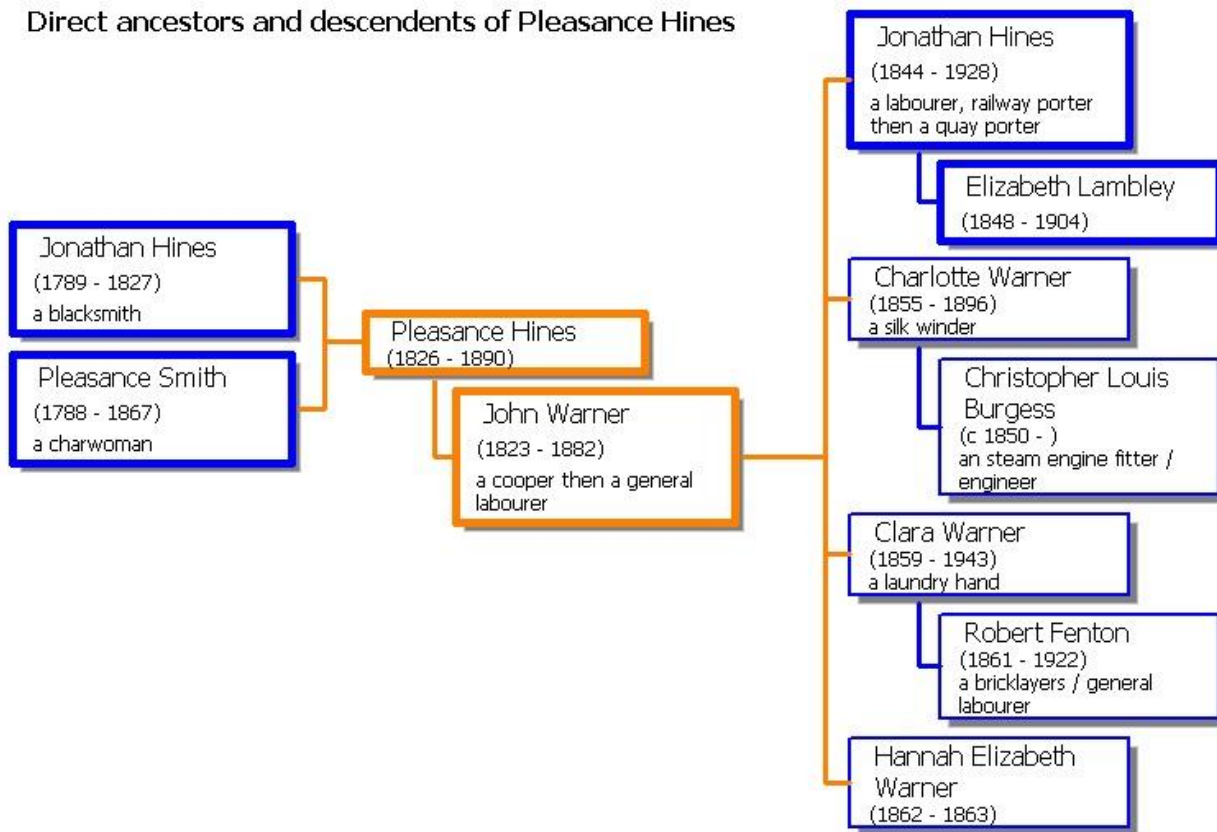


References

1. Marriage Certificate, son Jonathan.
2. Suffolk Family History Society Ipswich Baptisms 1813-1900, CD-ROM from the Suffolk Family History Society.
3. Census 1841, class:HO107 piece:1043 folio:14 page:20, online at www.ancestry.co.uk and www.findmypast.co.uk.
4. Census 1851, class:HO107 piece:1800 folio:86 page:7, online at www.ancestry.co.uk and www.findmypast.co.uk.
5. Census 1861, class:RG09 piece:1164 folio:58 page:12, online at www.ancestry.co.uk and www.findmypast.co.uk.
6. Census 1881, class:RG11 piece:1873 folio:143 page:21, online at www.ancestry.co.uk and www.findmypast.co.uk.
7. England and Wales Marriage Index 1837 - 2005, Ipswich 1847 Q2 vol:12 page:525, online at www.ancestry.co.uk and www.findmypast.co.uk.
8. Census 1871, class:RG10 piece:1754 folio:43 page:30, online at www.ancestry.co.uk and www.findmypast.co.uk.
9. Newspaper article, The Ipswich Journal Saturday 17 May 1879 page:9.
10. England and Wales Death Index 1837 - 2005, Ipswich 1882 Q4 vol:4a page:435, online at www.ancestry.co.uk and www.findmypast.co.uk.
11. National Burial Index for England & Wales v.3, CD-ROM from The Federation of Family History Societies, 2010.
12. Newspaper article, The Ipswich Journal Saturday 25 November 1882 page:5.

Chapter 13 Pleasance Hines 1826 - 1890

Direct ancestors and descendents of Pleasance Hines



Pleasance Hines ¹

1826 - 1890

Pleasance, also known as Pleasant,² was born on Sunday 16th April 1826 in Ipswich, Suffolk^{3,1} and baptised on 25th December 1827 at St. Clement, Ipswich, Suffolk (daughter of Johnathan Hines (blacksmith) and Pleasance of Fore Hamlet).¹ She appeared on the census of 6th June 1841 in Fore Street, St. Clement, Ipswich, Suffolk (aged 15 as Pleasant Hines, living with mother and three siblings, born Suffolk).²

Pleasance and John Warner (son of William Warner and Ann Warner formerly Pressney) had a son, Jonathan in 1844, and married about May 1847 in Ipswich, Suffolk.^{1,4} In total they had four children; **Jonathan Hines 1844-1928**; Charlotte Warner 1855-1896; Clara Warner 1859-1943; and Anna Elizabeth Warner c1862-1863.

Pleasance appeared on the census of 30th March 1851 in Fore Hamlet, St. Clement, Ipswich, Suffolk (wife aged 24 married, living with husband and a son, born Ipswich, Suffolk)³; on the census of 7th April 1861 at 30 Fore Hamlet, St. Clement, Ipswich, Suffolk (wife aged 37 married, living with husband and three children, born Ipswich, Suffolk)⁵; on the census of 2nd April 1871 at 40 Fore Hamlet, Trinity, Ipswich, Suffolk (wife aged 44 married, living with husband and two children, born Ipswich, Suffolk)⁶; and on the census of 3rd April 1881 at 4 Short Lane, St. Clement, Ipswich, Suffolk (wife aged 55 married, living with husband and a daughter, born St. Clement, Ipswich, Suffolk).⁷

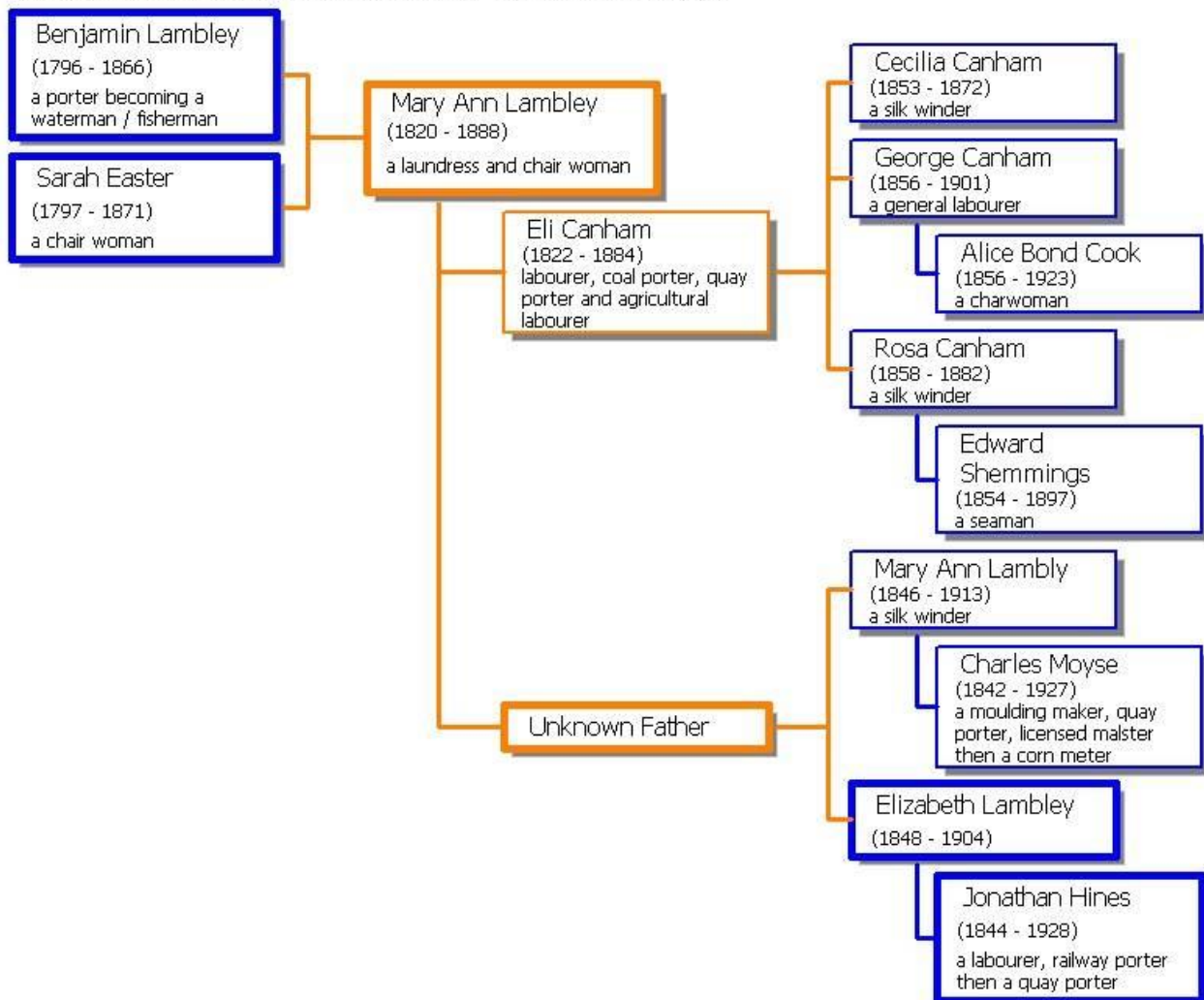
Pleasance was widowed when her husband John died in November 1882.⁸ She died about May 1890 in Essex aged 62.⁸

References

1. Suffolk Family History Society Ipswich Baptisms 1813-1900, Suffolk Family History Society CD.
2. Census 1841, class:HO107 piece:1043 folio:15 page:7, online at www.ancestry.co.uk and www.findmypast.co.uk.
3. Census 1851, class:HO107 piece:1800 folio:86 page:7, online at www.ancestry.co.uk and www.findmypast.co.uk.
4. England and Wales Marriage Index 1837 - 2005, Ipswich 1847 Q2 vol:12 page:525, online at www.ancestry.co.uk and www.findmypast.co.uk.
5. Census 1861, class:RG09 piece:1164 folio:58 page:12, online at www.ancestry.co.uk and www.findmypast.co.uk.
6. Census 1871, class:RG10 piece:1754 folio:43 page:30, online at www.ancestry.co.uk and www.findmypast.co.uk.
7. Census 1881, class:RG11 piece:1873 folio:143 page:21, online at www.ancestry.co.uk and www.findmypast.co.uk.
8. England and Wales Death Index 1837 - 2005, West Ham 1890 Q2 vol:4a page:116, online at www.ancestry.co.uk and www.findmypast.co.uk.
9. England and Wales Death Index 1837 - 2005, Ipswich 1882 Q4 vol:4a page:435, online at www.ancestry.co.uk and www.findmypast.co.uk.

Chapter 14 Mary Ann Lambley c1820 - 1888

Direct ancestors and descendents of Mary Ann Lambley



Mary Ann Lambley ^{1,2}

c1820 - 1888

Mary (a laundress and chair woman^{1,3}) was born about 1820 in Ipswich, Suffolk.⁴ and baptised on 20th October 1820 at St. Clement, Ipswich, Suffolk (daughter of Benjamin Lambly (porter) and Sarah of back of the Green Man).⁴ She appeared on the census of 6th June 1841 in Long Lane, St. Clement, Ipswich, Suffolk (aged 20 living with parents and seven siblings, born Suffolk)² and twice on the census of 30th March 1851, firstly in New Street, St. Clement, Ipswich, Suffolk (lodger aged 29 single, laundress living with two children with Robert Goodman and family, born Ipswich, Suffolk)¹ and secondly in Long Lane, St. Clement, Ipswich, Suffolk (daughter aged 25 single, chair woman living with parents, four siblings and three nephews (note census says sons), born Ipswich, Suffolk).⁵

Mary had two illegitimate daughters by an unknown father(s), Mary Ann Lambley 1846-1913 and **Elizabeth Lambley 1848-1904**.

Mary then married Eli Canham, son of John Canham and Jemima Canham formerly Margorum, on 2nd November 1851 at The Register Office, Ipswich, Suffolk.^{6,7} Mary and Eli had three children; Cecelia Canham 1853-1872; George Canham 1856-1891-1901?; and Rosa Canham 1858-1882.

She appeared on the census of 7th April 1861 in Cowper Street, St. Margaret, Ipswich, Suffolk (wife aged 38 married, living with husband and four children, born Ipswich, Suffolk)⁸; on the census of 2nd April 1871 in Samuel Terrace, Caldwell Hall Road, St. Margaret, Ipswich, Suffolk (wife aged 50, chair woman living with husband, three children and a son-in-law, born Ipswich, Suffolk)³; and on the census of 3rd April 1881 at 3 Samuel Terrace, Caldwell Hall Road, St. Margaret, Ipswich, Suffolk (wife aged 58, living with husband, a daughter and two grandchildren, born Ipswich, Suffolk).⁹

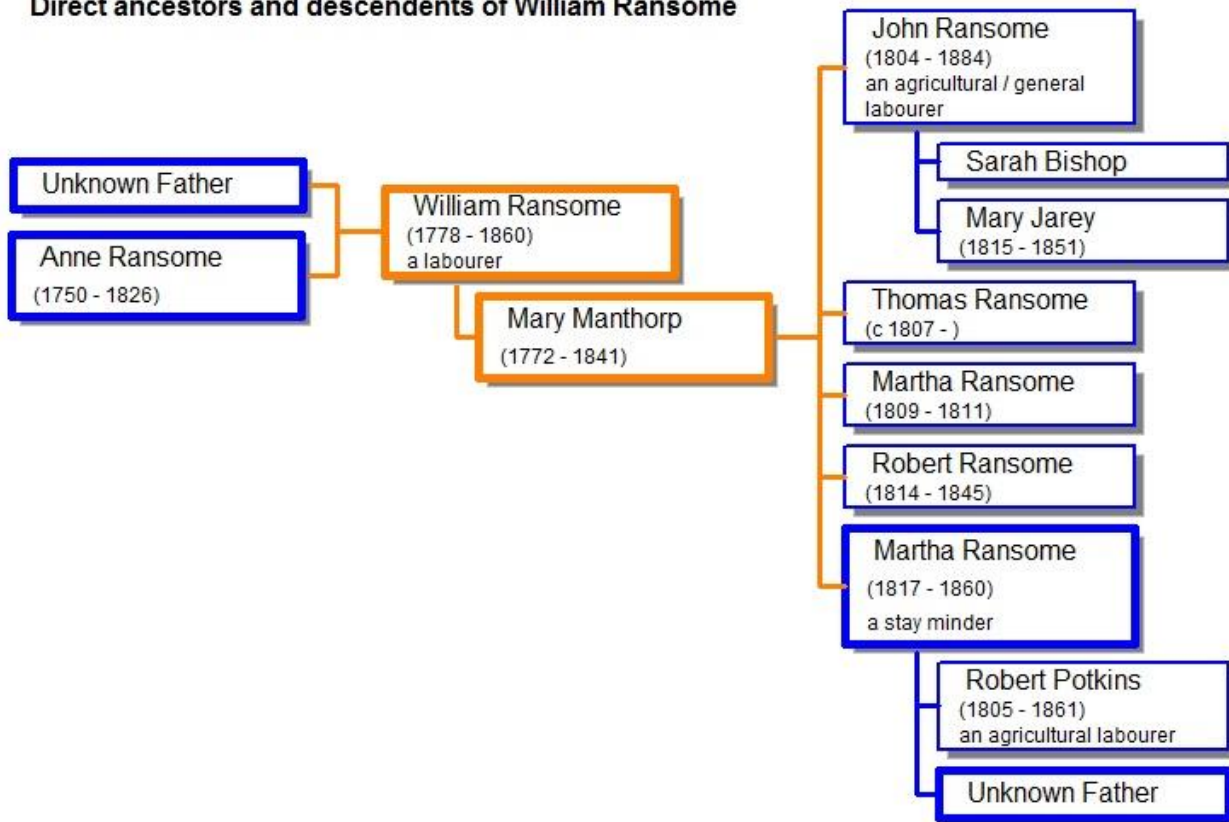
Mary died in August 1888 in Ipswich, Suffolk^{10,11} and was buried on Friday 17th August 1888 in Ipswich Cemetery, Belvedere Road, Ipswich, Suffolk, aged 66.¹⁰

References

1. Census 1851, class:HO107 piece:1800 folio:192 page:14, online at www.ancestry.co.uk and www.findmypast.co.uk.
2. Census 1841, class:HO107 piece:1043 folio:10 page:13, online at www.ancestry.co.uk and www.findmypast.co.uk.
3. Census 1871, class:RG10 piece:1755 folio:25 page:7, online at www.ancestry.co.uk and www.findmypast.co.uk.
4. Suffolk Family History Society Ipswich Baptisms 1813-1900, Suffolk Family History Society CD.
5. Census 1851, class:HO107 piece:1800 folio:176 page:19, online at www.ancestry.co.uk and www.findmypast.co.uk.
6. England and Wales Marriage Index 1837 - 2005, Ipswich vol:12 page:703, online at www.ancestry.co.uk and www.findmypast.co.uk.
7. Marriage Certificate.
8. Census 1861, class:RG09 piece:1165 folio:27 page:15, online at www.ancestry.co.uk and www.findmypast.co.uk.
9. Census 1881, class:RG11 piece:1875 folio:36 page:27, online at www.ancestry.co.uk and www.findmypast.co.uk.
10. National Burial Index for England & Wales v.3, CD-ROM from The Federation of Family History Societies, 2010.
11. England and Wales Death Index 1837 - 2005, Ipswich 1888 Q3 vol:4a page:386, online at www.ancestry.co.uk and www.findmypast.co.uk.

Chapter 15 William Ransome 1778 - 1860

Direct ancestors and descendents of William Ransome



William Ransome ^{1,2,3,4}

c1778 - 1860

William, a 2 times great grandfather of Frederick, was a labourer.² He was born about 1778 in Wood Dalling, Norfolk^{1,3,5,4} and was baptised on 24th January 1779 in Wood Dalling, Norfolk (illegitimate son of Anne Ransome).⁴

William married Mary Manthorp, daughter of Leman Manthorp and Catharine, on Tuesday 8th May 1804 in Wood Dalling, Norfolk.⁶ William and Mary had five children; John Ransome c1804-1884; Thomas Ransome c1807-?; Martha Ransome c1809-1811; Robert Ransome c1814-1845; and **Martha Ransome c1817-1860**.

William appeared on the census of 6th June 1841 in Wood Dalling, Norfolk (aged 69, living with wife, a son and another, born Norfolk).⁵ William was widowed when his wife Mary died in November 1841 aged 69.^{7,9} He then appeared on the census of 30th March 1851 in Wood Dalling, Norfolk (lodger aged 75 widower, living with son and four grandchildren, born Wood Dalling, Norfolk).³

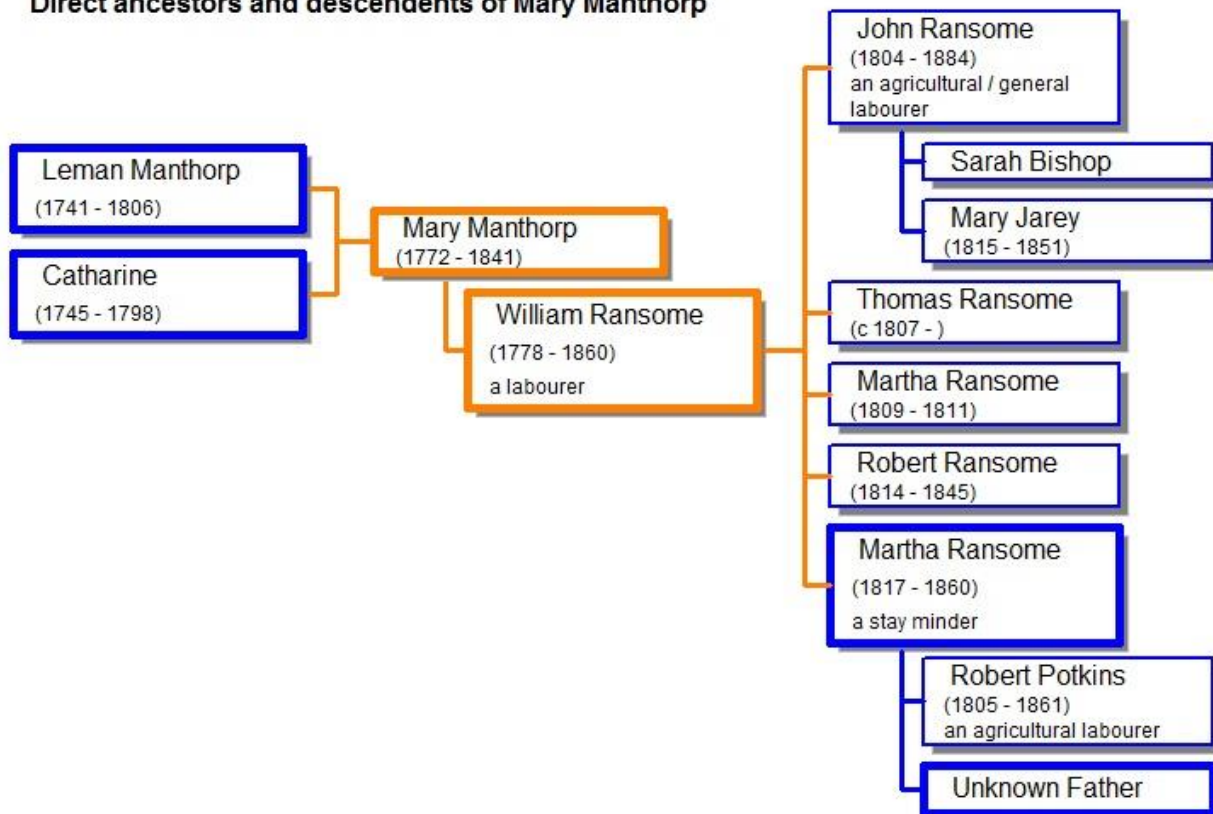
William died in April 1860 in Norfolk^{7,8} and was buried on Wednesday 18th April 1860 at St. Andrew, Wood Dalling, Norfolk, aged 82.⁷

References

1. Steven John Ransome personal communication, Family Tree via email - Jan 2003.
2. Norfolk Baptism Project, Wood Dalling St. Andrew entry:17, online at www.freepages.genealogy.rootsweb.ancestry.com/~tinstaafl.
3. Census 1851, class:HO107 piece:1810 folio:19 page:30, online at www.ancestry.co.uk and www.findmypast.co.uk.
4. International Genealogical Index (later FamilySearch), batch:C04040-1 sys:England-ODM film:894725, online at www.familysearch.org.
5. Census 1841, class:HO107 piece:764 folio:2A page:3, online at www.ancestry.co.uk and www.findmypast.co.uk.
6. International Genealogical Index (later FamilySearch), batch:M04040-1 sys:England-ODM film:894725, online at www.familysearch.org.
7. National Burial Index for England & Wales v.3, CD-ROM from The Federation of Family History Societies, 2010.
8. England and Wales Death Index 1837 - 2005, Aylsham 1860 Q2 vol:4b page:56, online at www.ancestry.co.uk and www.findmypast.co.uk.
9. England and Wales Death Index 1837 - 2005, Aylsham 1841 Q4 vol:13 page:9, online at www.ancestry.co.uk and www.findmypast.co.uk.

Chapter 16 Mary Manthorpe c1772 – 1841

Direct ancestors and descendents of Mary Manthorpe



Mary Manthorp ^{1,2,3}

c1772 - 1841

Mary, a two times great grandmother of Frederick, was born about 1772 in Norfolk.⁴ However the only baptism found makes her seven years old, so this may not be correct. This baptism was on 11th October 1779 in Wood Dalling, Norfolk (daughter of Leman Manthorp and Catharine as Mary Ann Manthorpe).³

Mary married William Ransome, illegitimate son of Anne Ransome, on 8th May 1804 at Wood Dalling, Norfolk.¹ Mary and William had five children; John Ransome c1804-1884; Thomas Ransome c1807-?; Martha Ransome c1809-1811; Robert Ransome c1814-1845; and **Martha Ransome c1817-1860**.

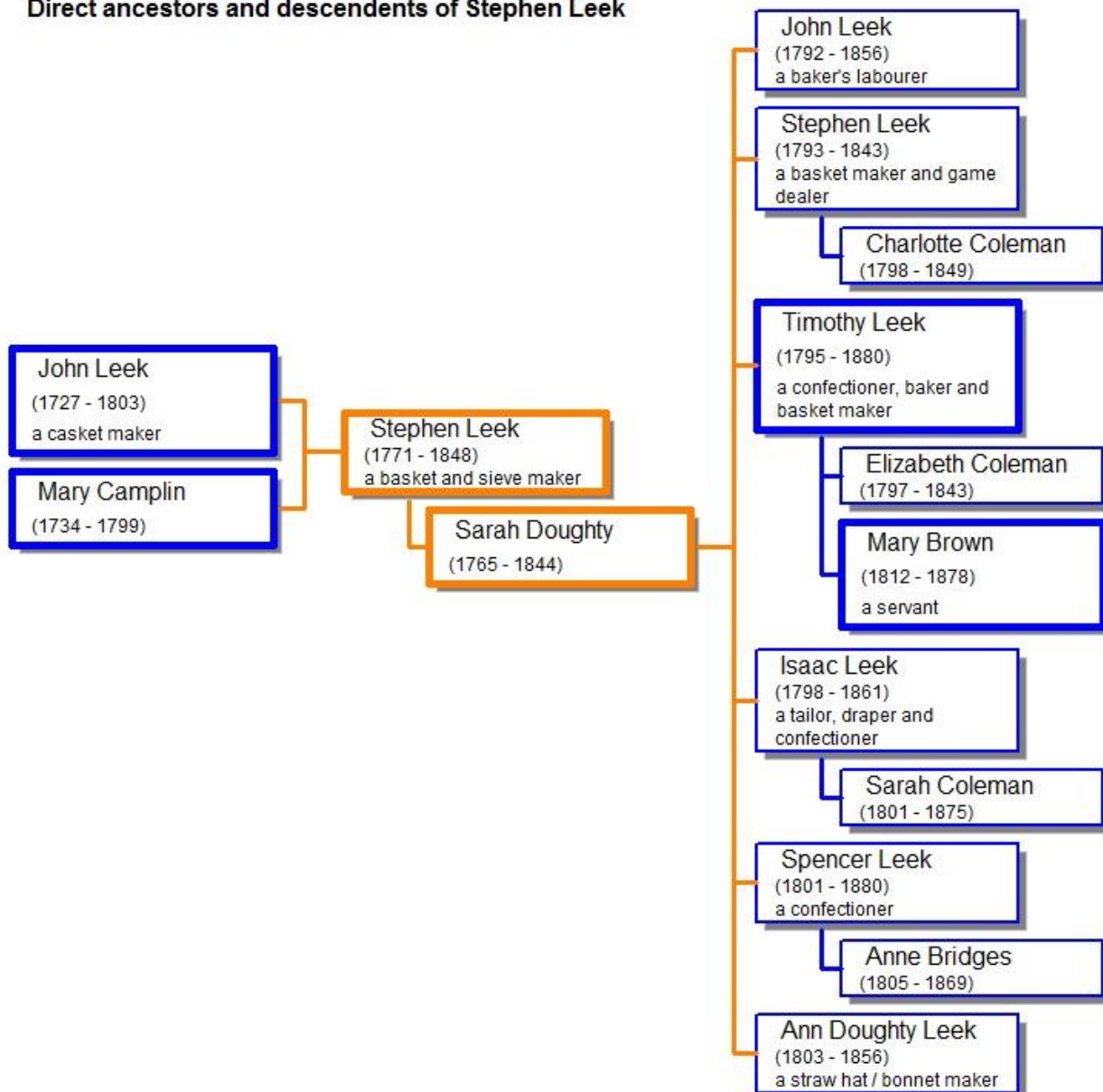
She appeared on the census of 6th June 1841 in Wood Dalling, Norfolk (aged 69, living with husband, a son and another, born Norfolk).⁴ Mary died in November 1841 in Norfolk^{5,6} and was buried on Monday 22nd November 1841 at St. Andrew, Wood Dalling, Norfolk, aged 69.⁶

References

1. International Genealogical Index (later FamilySearch), batch:M04040-1 sys:England-ODM film:894725, online at www.familysearch.org.
2. Norfolk Baptism Project, Wood Dalling St. Andrew entry:17, online at www.freepages.genealogy.rootsweb.ancestry.com/~tinstaafl.
3. International Genealogical Index (later FamilySearch), batch:C4040-1 sys:England-ODM film:894725, online at www.familysearch.org.
4. Census 1841, class:HO107 piece:764 folio:2A page:3, online at www.ancestry.co.uk and www.findmypast.co.uk.
5. England and Wales Death Index 1837 - 2005, Aylsham 1841 Q4 vol:13 page:9, online at www.ancestry.co.uk and www.findmypast.co.uk.
6. National Burial Index for England & Wales v.3, CD-ROM from The Federation of Family History Societies, 2010.

Chapter 17 Stephen Leek c1771 – 1848

Direct ancestors and descendents of Stephen Leek



9Stephen Leek ^{1,2,3}

c1771 - 1848

Stephen, a two times great grandfather of Frederick, was a basket and sieve maker.^{1,4} He was born about 1771 in Woodbridge, Suffolk^{4,2,3} and baptised on 20th April 1771 at St. Mary, Woodbridge, Suffolk (son of John Leek and Mary).^{3,2}

Stephen married Sarah Doughty, daughter of George Doughty and Ephaneul Doughty formerly Sparham, on Tuesday 12th April 1791 at St. Michael, Framlingham, Suffolk, both single of this parish, by licence, witnesses Willm Spalding and Daniel Dickerson.^{4,5,6} Stephen and Sarah had seven children; John Leek c1791-1792; John Leek c1792-1856; Stephen Leek c1793-1843; **Timothy Leek c1795-1880**; Isaac Leek c1798-1861; Spencer Leek c1801-1880; and Ann Doughty Leek c1803-1856.

He appeared on the census of 6th June 1841 in Well Close Lane, Framlingham, Suffolk (aged 70, basket maker living with wife and a son, born Suffolk).⁴ Sadly Stephen was widowed on 4th May 1844 when his wife Sarah died aged 79.^{9,11,12,13}

On 6 August 1847 at The Crown Hotel, Framlingham, Suffolk, Stephen's home and shop

Lot 2. Four capital Freehold White-brick and Tile
TENEMENTS ; comprising two Front Shops, Loft, three
Low-rooms, two Pantries, four Bed-rooms, Coal-houses,
Gig-house, Stable with Loft, front and back walled-in
yards, pump of water, in the occupations of Mr. Stephen
Leek, Basket Maker, and Miss Leek, Straw Bonnet
Maker, at the annual rent of £17 0s. 0d. ; adjoining, two

were to be sold at auction.^{7,8}

Stephen died in August 1848 in Suffolk^{9,10, 14} and was buried on

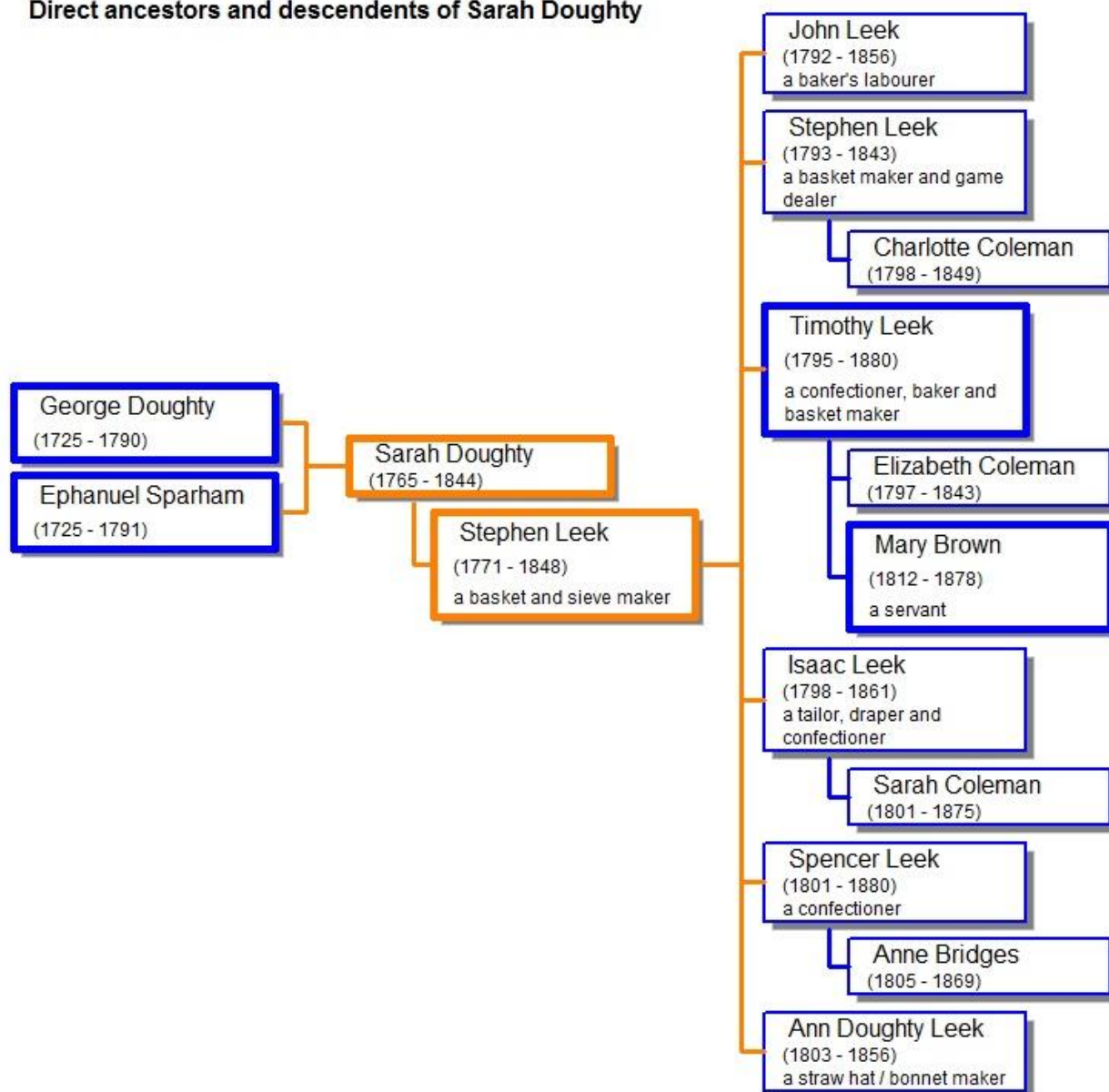
Monday 7th August 1848 at St. Michael, Framlingham, Suffolk, aged 78.^{9,14}

References

1. Marriage Certificate, daughter Mary to Timothy Leek.
2. Suffolk Records Office (Ipswich) - Parish Records, Woodbridge St. Mary fiche:12 of 68.
3. International Genealogical Index (later FamilySearch), batch:C06325-2 sys:England-ODM film:919635, online at www.familysearch.org.
4. Census 1841, class:HO107 piece:1028 folio:53 page:19, online at www.ancestry.co.uk and www.findmypast.co.uk.
5. International Genealogical Index (later FamilySearch), Norwich Consistory Court batch:I07856-1 sys:England-EASy film:1595993, online at www.familysearch.org.
6. Suffolk Family History Society Framlingham St Michael, Marriages 1560-1920 page:86, Suffolk Family History Society CD.
7. Newspaper article, The Ipswich Journal Saturday 31 July 1847 page:1.
8. Newspaper article, The Ipswich Journal Saturday 24 July 1847 page:1.
9. National Burial Index for England & Wales v.3, CD-ROM from The Federation of Family History Societies, 2010.
10. England and Wales Death Index 1837 - 2005, Plomesgate 1848 Q3 vol:12 page:259, online at www.ancestry.co.uk and www.findmypast.co.uk.
11. Newspaper article, The Ipswich Journal Saturday 11 May 1844 page:3.
12. Newspaper article, The Bury and Norwich Post Wednesday 15 May 1844 page:2.
13. England and Wales Death Index 1837 - 2005, Plomesgate 1844 Q2 vol:12 page:251, online at www.ancestry.co.uk and www.findmypast.co.uk.
14. Suffolk Family History Society Framlingham St Michael, Burials 1765-1920 page:104.

Chapter 18 Sarah Doughty c1765 - 1844

Direct ancestors and descendents of Sarah Doughty



Sarah Doughty^{1,2,3,4}

c1765 - 1844

Sarah, a two times great grandmother of Frederick, was born about 1765 in Suffolk^{1,3,9} and baptised on 28th April 1766 at St. Michael, Framlingham, Suffolk (daughter of George and Ephanuel Doughty).⁴

Sarah married Stephen Leek, son of John Leek and Mary Camplin, on 12th April 1791 at St. Michael, Framlingham, Suffolk, both single of this parish, by licence, witnesses Willm Spalding and Daniel Dickerson.^{1,5,2} Sarah and Stephen had seven children; John Leek c1791-1792; John Leek c1792-1856; Stephen Leek c1793-1843; **Timothy Leek c1795-1880**; Isaac Leek c1798-1861; Spencer Leek c1801-1880; and Ann Doughty Leek c1803-1856.

She appeared on the census of 6th June 1841 in Well Close Lane, Framlingham, Suffolk (aged 75, living with husband and a son, born Suffolk).¹

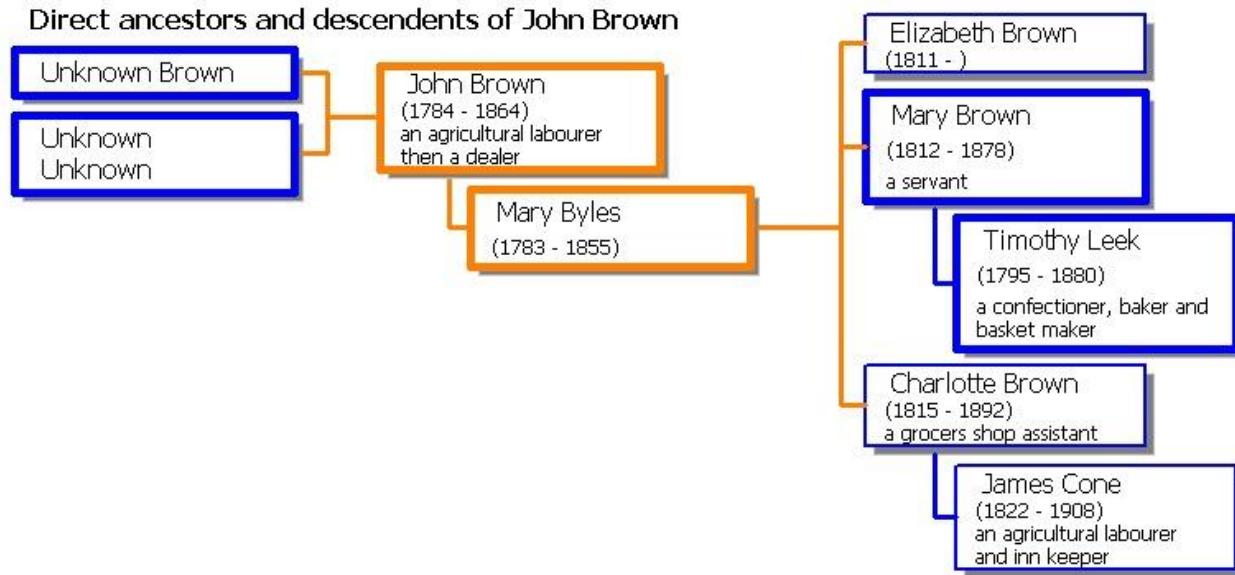
Sarah died on Saturday 4th May 1844 in Framlingham, Suffolk, aged 79, last surviving daughter of Mr George Doughty formerly of the White Horse Inn, Framlingham.^{6,3,7,8,9} She was buried on Thursday 9th May 1844 at St. Michael, Framlingham, Suffolk, aged 79 as Sarah Leeke.^{6,9}

References

1. Census 1841, class:HO107 piece:1028 folio:53 page:19, online at www.ancestry.co.uk and www.findmypast.co.uk.
2. Suffolk Family History Society Framlingham St Michael, Marriages 1560-1920 page:86, Suffolk Family History Society CD.
3. Newspaper article, The Ipswich Journal Saturday 11 May 1844 page:3.
4. Suffolk Family History Society Framlingham St Michael, Baptisms 1718-1841 page:72.
5. International Genealogical Index (later FamilySearch), Norwich Consistory Court batch:I07856-1 sys:England-EASy film:1595993, online at www.familysearch.org.
6. National Burial Index for England & Wales v.3, CD-ROM from The Federation of Family History Societies, 2010.
7. Newspaper article, The Bury and Norwich Post Wednesday 15 May 1844 page:2.
8. England and Wales Death Index 1837 - 2005, Plomesgate 1844 Q2 vol:12 page:251, online at www.ancestry.co.uk and www.findmypast.co.uk.
9. Suffolk Family History Society Framlingham St Michael, Burials 1765-1920 page:98.

Chapter 19 John Brown c1784 - 1864

Note as there are a lot of John Browns we are not certain about him.



John Brown ^{1,2}

c1784 - 1864

There is a risk that this is not the right John Brown, as on Mary's marriage certificate it says his occupation was a dealer and such a John Brown cannot be found. This John and Mary Brown lived near the right place at the right time.

John, a two times great grandfather of Frederick, was an agricultural labourer then a dealer.^{1,3,2,4} He was born about 1784 in Crowfield, Suffolk.^{2,4} Details of his parents are unknown as the parish records seem to be missing for this period. John married Mary Byles, daughter of John Byles and Sarah Sawyer, on Monday 11th June 1810 at All Saints, Hacheston, Suffolk, both single of this parish, by banns, witnesses James Sparkes and Daniel Webber.^{5,6} John and Mary had three children; Elizabeth Brown 1811-1877; **Mary Brown 1812-1878**; and Charlotte Brown 1815-1892.

He appeared on the census of 6th June 1841 in Winston, Suffolk (aged 55, agricultural labourer living with wife, born Suffolk)² and on the census of 30th March 1851 in Winston, Suffolk (head aged 67 married, pauper late agricultural labourer living with wife, born Crowfield, Suffolk).⁴

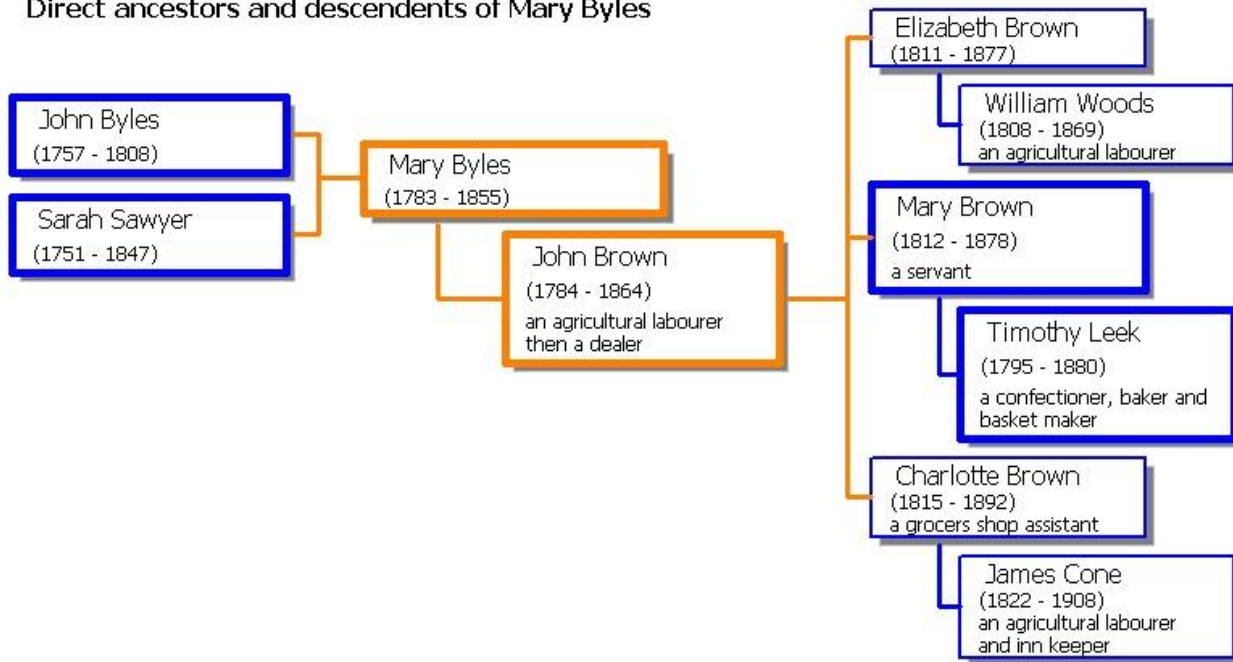
John was widowed in November 1855 when his wife Mary died.^{8,10} He then appeared on the census of 7th April 1861 in Fen Street, Winston, Suffolk (aged 77 widower, living alone, born Crowfield, Suffolk).⁷ John died in May 1864 in Suffolk.^{8,9} and was buried on Thursday 26th May 1864 at St. Andrew, Winston, Suffolk, aged 80.⁸

References

1. Marriage Certificate, daughter Mary to Timothy Leek.
2. Census 1841, class:HO107 piece:1038 folio:6 page:7, online at www.ancestry.co.uk and www.findmypast.co.uk.
3. Suffolk Family History Society Ipswich Baptisms 1813-1900, daughter Charlotte's baptism, Suffolk Family History Society CD.
4. Census 1851, class:HO107 piece:1797 folio:73 page:3, online at www.ancestry.co.uk and www.findmypast.co.uk.
5. International Genealogical Index (later FamilySearch), batch:M06317-2 sys:England-ODM film: 919577, online at www.familysearch.org.
6. Suffolk Records Office (Ipswich) - Parish Records, Hacheston fiche:8 of 15.
7. Census 1861, class:RG09 piece:1156 folio:115 page:1, online at www.ancestry.co.uk and www.findmypast.co.uk.
8. National Burial Index for England & Wales v.3, CD-ROM from The Federation of Family History Societies, 2010.
9. England and Wales Death Index 1837 - 2005, Bosmere 1864 Q2 vol:4a page:379, online at www.ancestry.co.uk and www.findmypast.co.uk.
10. England and Wales Death Index 1837 - 2005, Bosmere 1855 Q4 vol:4a page:332, online at www.ancestry.co.uk and www.findmypast.co.uk.

Chapter 20 Mary Byles c1783 - 1855

Direct ancestors and descendents of Mary Byles



Mary Byles ^{1,2}

c1783 - 1855

Mother - daughter association by best fit baptism and daughters were living as niece (1851 for Charlotte) with sister Elizabeth. There is a risk that this is not the right Mary, but this Mary and John Brown lived near the right place at the right time.

Mary, a two times great grandmother of Frederick, was born about 1783 in Ashfield, Suffolk.^{3,4,5} and she married John Brown, details of parents unknown at present, on 11th June 1810 at All Saints, Hacheston, Suffolk, both single of this parish, by banns, witnesses James Sparkes and Daniel Webber.^{6,7} Mary and John had three children; Elizabeth Brown 1811-1877; **Mary Brown 1812-1878**; and Charlotte Brown 1815-1892.

She appeared on the census of 6th June 1841 in Winston, Suffolk (aged 55, living with husband, born Suffolk)³ and on the census of 30th March 1851 in Winston, Suffolk (wife aged 67 married, pauper living with husband, born Ashfield, Suffolk).⁵

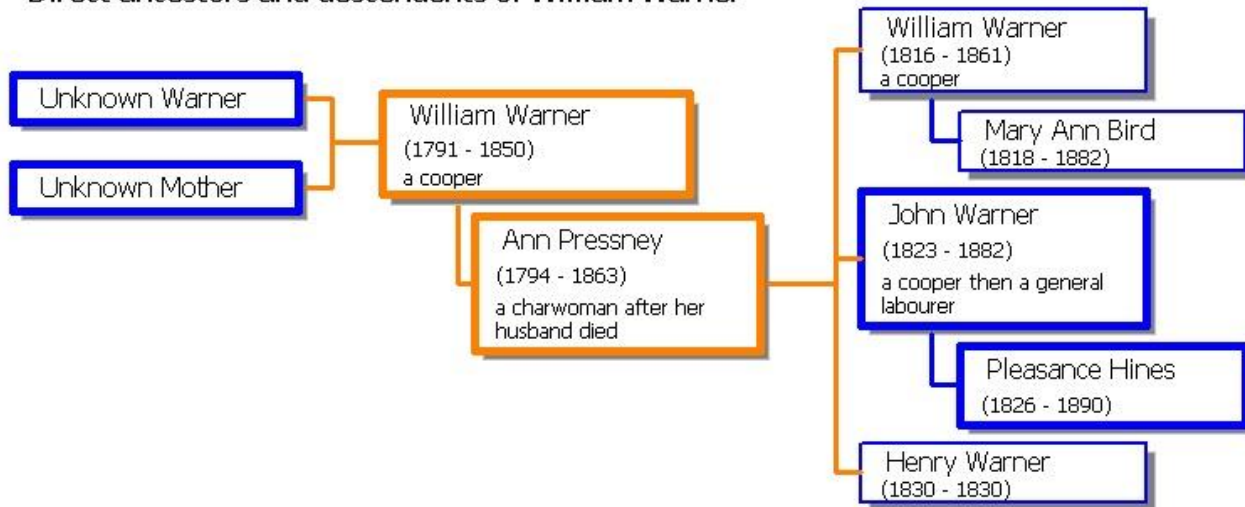
Mary died in November 1855 in Suffolk^{4,8} and was buried on Tuesday 20th November 1855 at St. Andrew, Winston, Suffolk, aged 72.⁴

References

1. Suffolk Family History Society Ipswich Baptisms 1754-1812, Suffolk Family History Society CD.
2. International Genealogical Index (later FamilySearch), batch:C06317-3 sys:England-VR film:919577 ref:-2:137WNXW, online at www.familysearch.org.
3. Census 1841, class:HO107 piece:1038 folio:6 page:7, online at www.ancestry.co.uk and www.findmypast.co.uk.
4. National Burial Index for England & Wales v.3, CD-ROM from The Federation of Family History Societies, 2010.
5. Census 1851, class:HO107 piece:1797 folio:73 page:3, online at www.ancestry.co.uk and www.findmypast.co.uk.
6. International Genealogical Index (later FamilySearch), batch:M06317-2 sys:England-ODM film: 919577, online at www.familysearch.org.
7. Suffolk Records Office (Ipswich) - Parish Records, Hacheston fiche:8 of 15.
8. England and Wales Death Index 1837 - 2005, Bosmere 1855 Q4 vol:4a page:332, online at www.ancestry.co.uk and www.findmypast.co.uk.

Chapter 21 William Warner c1791 - 1850

Direct ancestors and descendents of William Warner

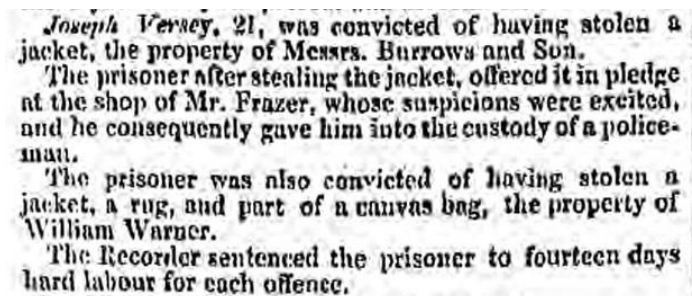


William Warner ¹

c1791 - 1850

William, a two times great grandfather of Frederick, was a cooper.¹ He was born about 1791 in Suffolk^{1,2} but details about his parents are currently unknown. He married Ann Pressney, (unknown parents) on Tuesday 7th November 1815 at St. Clement, Ipswich, Suffolk, both single of this parish, witnesses Mary Fulcher and William Cookes.^{1,3,4} William and Ann had three children; William Warner 1816-1861; **John Warner c1823-1882**; and Henry Warner c1830-1830.

William appeared on the census of 6th June 1841 in Long Lane, St. Clement, Ipswich,



Joseph Versey, 21, was convicted of having stolen a jacket, the property of Messrs. Burrows and Son. The prisoner after stealing the jacket, offered it in pledge at the shop of Mr. Frazer, whose suspicions were excited, and he consequently gave him into the custody of a policeman. The prisoner was also convicted of having stolen a jacket, a rug, and part of a canvas bag, the property of William Warner. The Recorder sentenced the prisoner to fourteen days hard labour for each offence.

Suffolk (aged 45, cooper living with wife and a son, born Suffolk).¹ It is possible that he may have been robbed of a jacket, a rug and part of a canvas bag by Joseph Veracy about March 1845.⁵

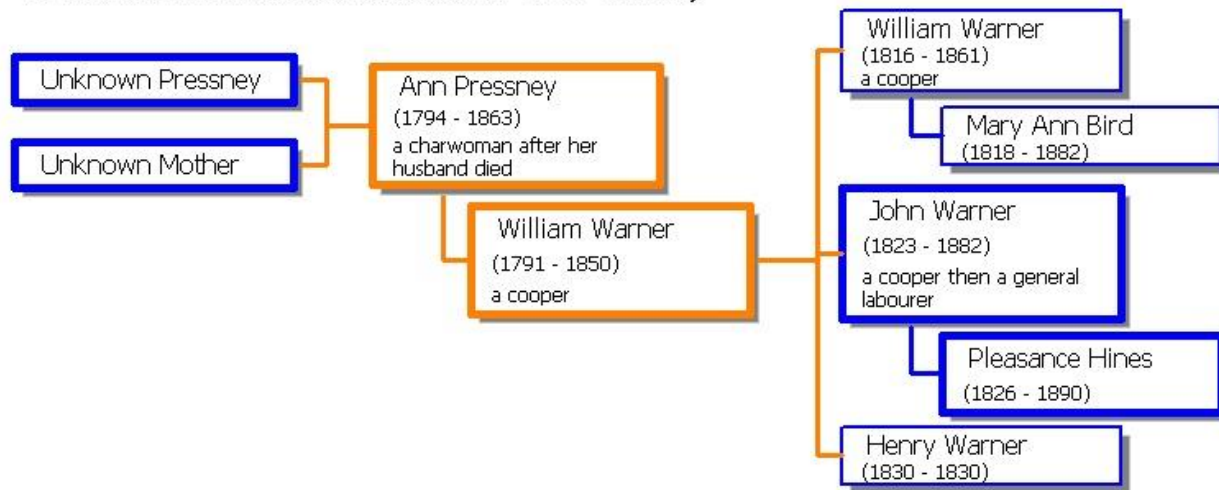
William died in December 1850 in Ipswich, Suffolk^{6,2} and was buried on Saturday 28th December 1850 at Holy Trinity, Back Hamlet, Ipswich, Suffolk, aged 59.²

References

1. Census 1841, class:HO107 piece:1043 folio:14 page:20, online at www.ancestry.co.uk and www.findmypast.co.uk.
2. National Burial Index for England & Wales v.3, CD-ROM from The Federation of Family History Societies, 2010.
3. Suffolk Marriage Index 1813 - 1837, Suffolk Family History Society, 1992 - 2005, vol:6 part:B page:53.
4. Suffolk Records Office (Ipswich) - Parish Records, Ipswich St. Clements fiche:20 of 88.
5. Newspaper article, The Ipswich Journal Saturday 29 March 1845 page:4.
6. England and Wales Death Index 1837 - 2005, Ipswich 1850 Q4 vol:12 page:245, online at www.ancestry.co.uk and www.findmypast.co.uk.

Chapter 22 Ann Pressney c1794 - 1863

Direct ancestors and descendents of Ann Pressney



Ann Pressney ^{1,2}

c1794 - 1863

Ann, a two times great grandmother of Frederick, became a charwoman after her husband died.³ She was born about 1794 in East Bergholt, Suffolk^{1,3} but details of her parents are currently unknown. Ann married William Warner, parents currently unknown, on 7th November 1815 at St. Clement, Ipswich, Suffolk, both single of this parish, witnesses Mary Fulcher and William Cookes.^{1,2,4} Ann and William had three children; William Warner 1816-1861; **John Warner c1823-1882**; and Henry Warner c1830-1830.

She appeared on the census of 6th June 1841 in Long Lane, St. Clement, Ipswich, Suffolk (aged 45, living with husband and a son, born Suffolk)¹; and on the census of 30th March 1851 in Long Lane, St. Clement, Ipswich, Suffolk (head aged 48 widow, parish relief living with a grandson, William MacDonald, born East Bergholt, Suffolk).⁵

Ann was widowed in December 1850 when her husband William died aged 59.^{7,8}

She then appeared on the census of 7th April 1861 at 5 Private House, Long Lane, St. Clement, Ipswich, Suffolk (head aged 67 widow, charwoman living with a William MacDonald, born East Bergholt, Suffolk).³

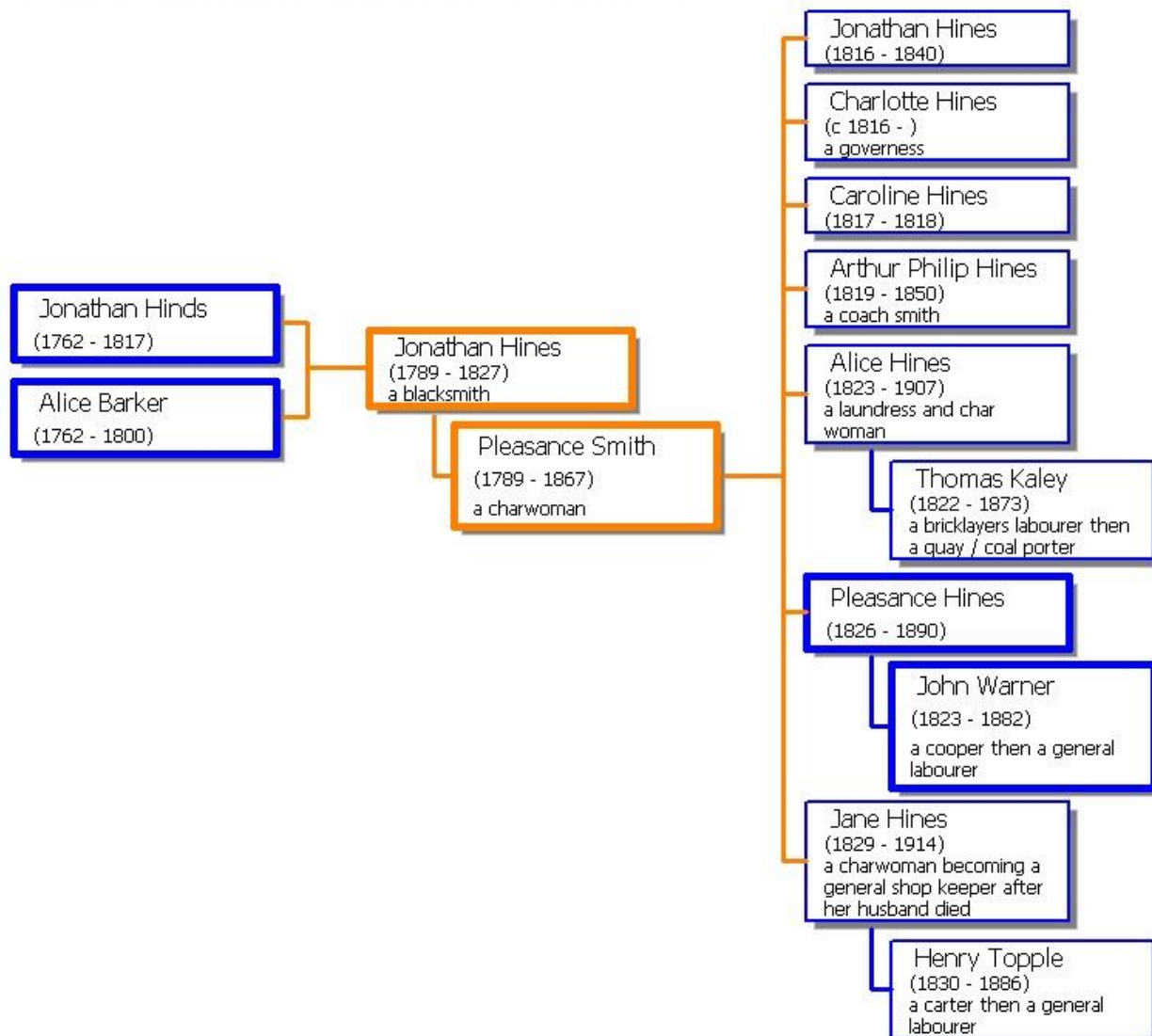
She died in February 1863 in Ipswich, Suffolk^{6,7} and was buried on Saturday 21st February 1863 in Ipswich Cemetery, Belvedere Road, Ipswich, Suffolk, aged 74.⁷

References

1. Census 1841, class:HO107 piece:1043 folio:14 page:20, online at www.ancestry.co.uk and www.findmypast.co.uk.
2. Suffolk Marriage Index 1813 - 1837, Suffolk Family History Society, 1992 - 2005, vol:6 part:B page:53.
3. Census 1861, class:RG09 piece:1164 folio:104 page:15, online at www.ancestry.co.uk and www.findmypast.co.uk.
4. Suffolk Records Office (Ipswich) - Parish Records, Ipswich St. Clements fiche:20 of 88.
5. Census 1851, class:HO107 piece:1800 folio:181 page:28, online at www.ancestry.co.uk and www.findmypast.co.uk.
6. England and Wales Death Index 1837 - 2005, Ipswich 1863 Q1 vol:4a page:424, online at www.ancestry.co.uk and www.findmypast.co.uk.
7. National Burial Index for England & Wales v.3, CD-ROM from The Federation of Family History Societies, 2010.
8. England and Wales Death Index 1837 - 2005, Ipswich 1850 Q4 vol:12 page:245, online at www.ancestry.co.uk and www.findmypast.co.uk.

Chapter 23 Jonathan Hines c1789 - 1827

Direct ancestors and descendents of Jonathan Hines



Jonathan Hines (Hinds) ^{1,2,3}

c1789 - 1827

Jonathan, a two times great grandfather of Frederick, was a blacksmith.¹ He was born about 1789⁴ and was baptised on 13th September 1789 at St. Clement, Ipswich, Suffolk (son of Jonathan and Alice Hinds).³

Jonathan married Pleasance Petitt (formerly Smith), details of parents unknown at this time, on Tuesday 8th November 1814 at St. Clement, Ipswich, Suffolk, Pleasance as Plaisance a widow.^{1,5} Jonathan and Pleasance had seven children; Jonathan Hines c1816-1840; twin Charlotte Hines c1816-?; Caroline Hines c1817-1818; Arthur Philip Hines c1819-1850; Alice Hines c1823-1907; **Pleasance Hines 1826-1890**; and Jane Hines c1829-1914 (her ages suggest that Jonathan may not be the father).

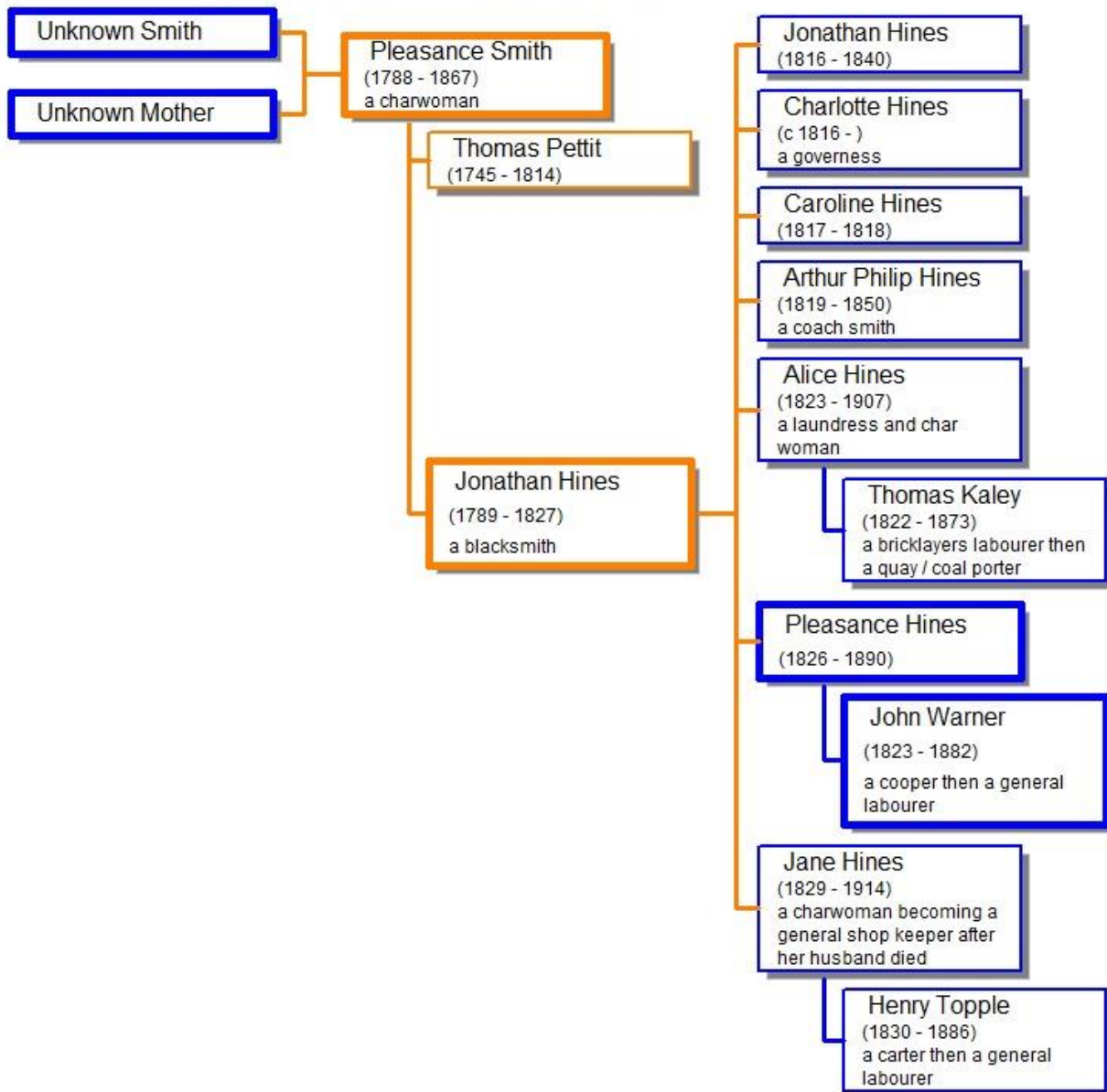
Jonathan died in October 1827⁴ and was buried on Tuesday 30th October 1827 at St. Clement, Ipswich, Suffolk, aged 38.⁴

References

1. Suffolk Family History Society Ipswich Baptisms 1813-1900, Suffolk Family History Society CD.
2. Suffolk Family History Society Ipswich Baptisms 1754-1812, son Jonathan, Suffolk Family History Society CD.
3. Suffolk Family History Society Ipswich Baptisms 1754-1812, Suffolk Family History Society CD.
4. National Burial Index for England & Wales v.3, CD-ROM from The Federation of Family History Societies, 2010.
5. Suffolk Marriage Index 1813 - 1837, Suffolk Family History Society, 1992 - 2005, vol:6 part:B page:28.

Chapter 24 Pleasance Smith c1788 - 1867

Direct ancestors and descendents of Pleasance Smith



Pleasance Smith ^{1,2}

c1788 - 1867

Pleasance, a two times great grandmother of Frederick, was a charwoman.³ He was born about 1788 in Debenham, Suffolk.^{5,3,7,6} Details about her parents are unknown at present.

She and Thomas Pettit had their banns read on 22nd November 1812, 29th November and 6th December 1812 at St. Mary Magdalene, Debenham, Suffolk, both single of this parish.⁸ Pleasance married Thomas Pettit, (unknown parents) on 21st April 1813 at St. Mary Magdalene, Debenham, Suffolk, by banns, witnesses ? Butcher and John Fairweather.^{4,2,9} It appears that Thomas died soon after as she remarried as a widow in 1815, but no record of a death has been found unless she married a Thomas Pettit who was 45 years her senior, who died in Winston in 1814 – seems this is the only one so might be correct.

Pleasance then married Jonathan Hines, son of Jonathan Hinds and Alice Barker, on 8th November 1814 at St. Clement, Ipswich, Suffolk, Pleasance recorded as Plaisance a widow.^{1,4} Pleasance and Jonathan had seven children; Jonathan Hines c1816-1840; twin Charlotte Hines c1816-?; Caroline Hines c1817-1818; Arthur Philip Hines c1819-1850; Alice Hines c1823-1907; **Pleasance Hines 1826-1890**; and Jane Hines c1829-1914 (her ages suggest that Jonathan may not be the father).

Pleasance was widowed for a second time when Jonathan died in October 1827⁷, being buried on Tuesday 30th October 1827 at St. Clement, Ipswich, Suffolk, aged 38.⁷

She appeared on the census of 6th June 1841 in Fore Street, St. Clement, Ipswich, Suffolk (aged 60 widow as Pleasant Hines, living with four children, born Suffolk)⁵; on the census of 30th March 1851 in Fore Street, St. Clement, Ipswich, Suffolk (head aged 62 widow, charwoman living with a daughter, born Debenham, Suffolk)³; and on the census of 7th April 1861 in Forks Court, Fore Hamlet, St. Clement, Ipswich, Suffolk (head aged 71 widow as Plagia Hines, charwoman living alone, born Debenham, Suffolk).⁶

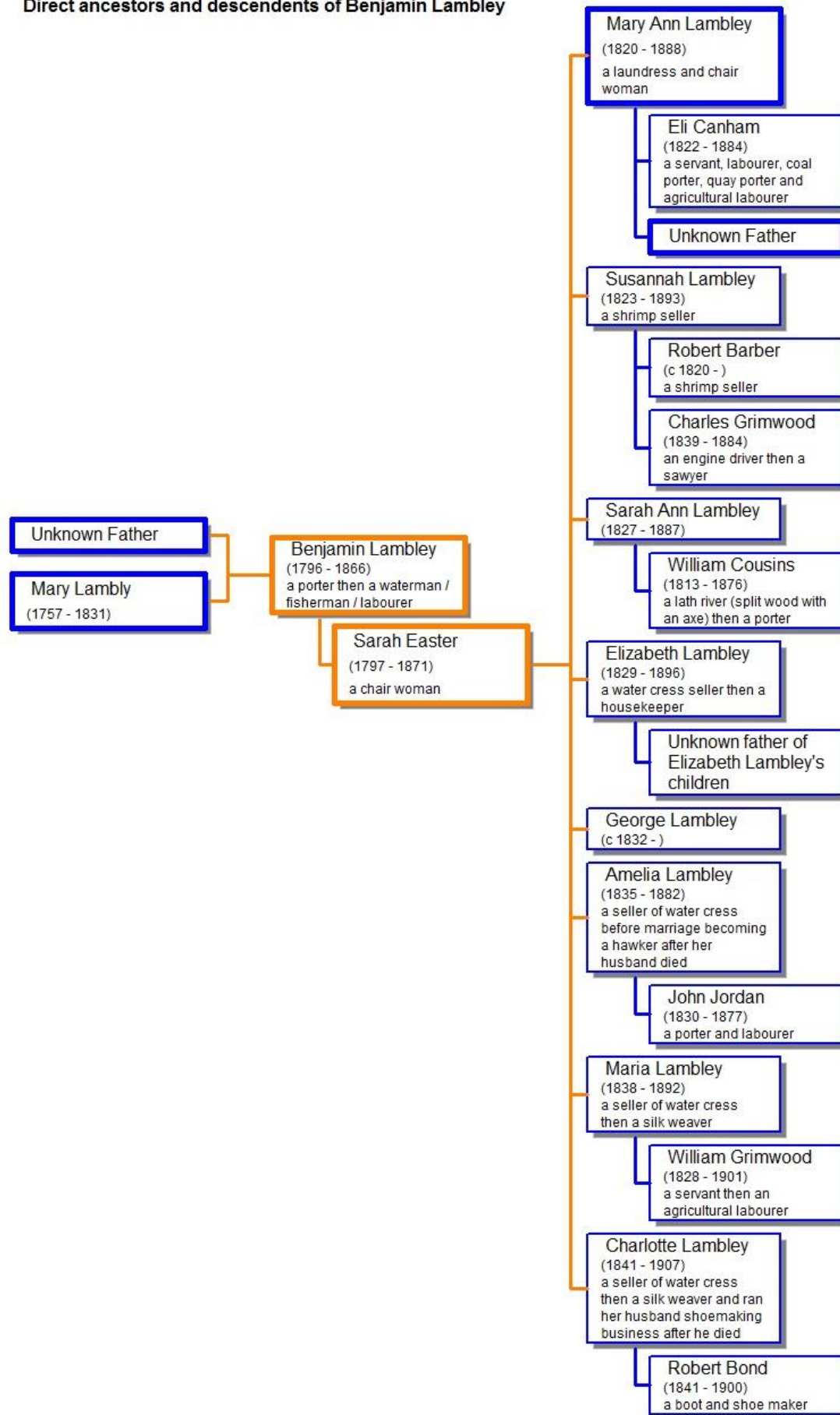
Pleasance died in February 1867 in Ipswich, Suffolk, aged 85^{7,10} and was buried on Saturday 2nd March 1867 at Ipswich Cemetery, Belvedere Road, Ipswich, Suffolk, aged 79.⁷ Note the age discrepancy between the death registration and the burial records.

References

1. Suffolk Family History Society Ipswich Baptisms 1813-1900, Suffolk Family History Society CD.
2. Suffolk Marriage Index 1813 - 1837, Suffolk Family History Society, 1992 - 2005, vol:11 page:53.
3. Census 1851, class:HO107 piece:1800 folio:88 page:11, online at www.ancestry.co.uk and www.findmypast.co.uk.
4. Suffolk Marriage Index 1813 - 1837, Suffolk Family History Society, 1992 - 2005, vol:6 part:B page:28.
5. Census 1841, class:HO107 piece:1043 folio:15 page:7, online at www.ancestry.co.uk and www.findmypast.co.uk.
6. Census 1861, class:RG09 piece:1164 folio:60 page:15, online at www.ancestry.co.uk and www.findmypast.co.uk.
7. National Burial Index for England & Wales v.3, CD-ROM from The Federation of Family History Societies, 2010.
8. Suffolk Records Office (Ipswich) - Parish Records, Debenham St. Mary Magdalene fiche:13.
9. Suffolk Records Office (Ipswich) - Parish Records, Debenham St. Mary Magdalene fiche:23.
10. England and Wales Death Index 1837 - 2005, Ipswich 1867 Q1 vol:4a page:408, online at www.ancestry.co.uk and www.findmypast.co.uk.

Chapter 25 Benjamin Lambley c1796 - 1866

Direct ancestors and descendents of Benjamin Lambley



Benjamin Lambley ^{1,2} (Lambly ³ / Lamley ⁴)

c1796 - 1866

Benjamin, a two times great grandfather of Frederick, was a porter then a waterman and fisherman.^{1,5,3,6,7} He was born about 1796 in Ipswich, Suffolk^{1,5,3} and baptised on 17th September 1797 at St. Clement, Ipswich, Suffolk (base born son of Mary Lambly).²

Benjamin married Sarah Easter, details of parents unknown at present, on Sunday 25th July 1819 at St. Clement, Ipswich, Suffolk, both single of this parish, by banns, witnesses Thomas Easter and Susan Bumstead.^{4,10} Benjamin and Sarah had eight children; **Mary Ann Lambley c1820-1888**; Susannah Lambley c1823-1893; Sarah Ann Lambley c1827-1887; Elizabeth Lambley c1829-1896; George Lambley c1832-?; Amelia Lambley c1835-1882; Maria Lambley 1838-1892; and Charlotte Lambley 1841-1907.

Benjamin appeared on the census of 6th June 1841 in Long Lane, St. Clement, Ipswich, Suffolk (aged 40, waterman living with wife and eight children, born Suffolk)¹; on the census of 30th March 1851 in Long Lane, St. Clement, Ipswich, Suffolk (head aged 57 married, waterman living with wife, five children and three grandsons (note census says sons), born Ipswich, Suffolk)⁵; and on the census of 7th April 1861 in Long Lane, St. Clement, Ipswich, Suffolk (head aged 65 married, waterman living with wife, two children and two grandsons, born Ipswich, Suffolk).³

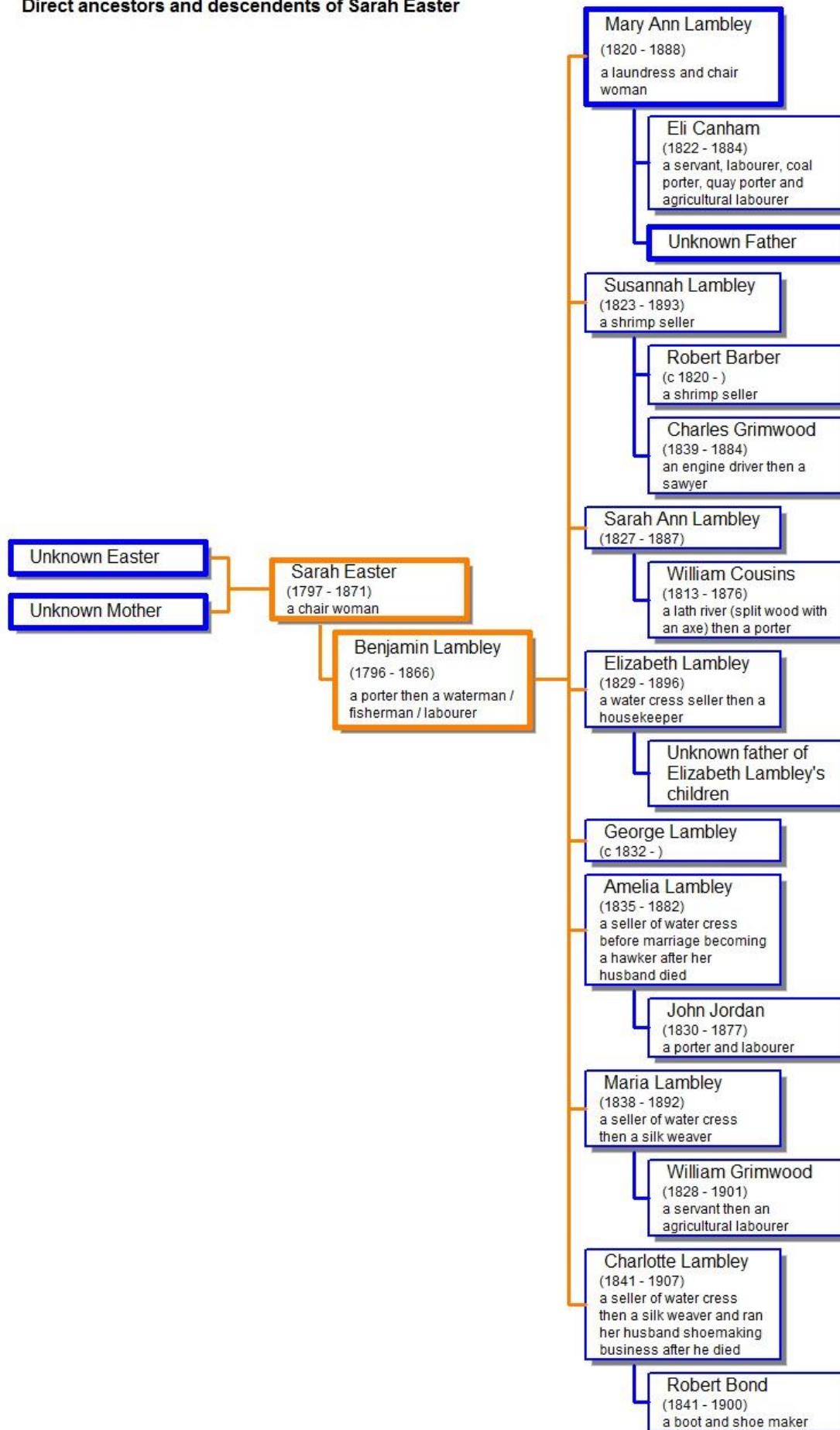
Benjamin died in November 1866 in Ipswich, Suffolk^{8,9} and was buried on Monday 26th November 1866 in Ipswich Cemetery, Belvedere Road, Ipswich, Suffolk, aged 79.⁸

References

1. Census 1841, class:HO107 piece:1043 folio:10 page:13, online at www.ancestry.co.uk and www.findmypast.co.uk.
2. Suffolk Family History Society Ipswich Baptisms 1754-1812, Suffolk Family History Society CD.
3. Census 1861, class:RG09 piece:1164 folio:106 page:19, online at www.ancestry.co.uk and www.findmypast.co.uk.
4. Suffolk Marriage Index 1813 - 1837, Suffolk Family History Society, 1992 - 2005, Ipswich Part B vol:6 page:32.
5. Census 1851, class:HO107 piece:1800 folio:176 page:19, online at www.ancestry.co.uk and www.findmypast.co.uk.
6. Marriage Certificate, Mary Ann to Eli Canham.
7. Suffolk Family History Society Ipswich Baptisms 1813-1900, Suffolk Family History Society CD.
8. National Burial Index for England & Wales v.3, CD-ROM from The Federation of Family History Societies, 2010.
9. England and Wales Death Index 1837 - 2005, Ipswich 1866 Q4 vol:4a page:355, online at www.ancestry.co.uk and www.findmypast.co.uk.
10. Suffolk Records Office (Ipswich) - Parish Records, Ipswich St. Clement fiche:21 of 88

Chapter 26 Sarah Easter c1797 - 1871

Direct ancestors and descendents of Sarah Easter



Sarah Easter ^{1,2}

c1797 - 1871

Sarah, a two times great grandmother of Frederick, was a chair woman.³ She was born about 1797 probably in Dennington, Suffolk, but Ipswich and Framlingham were also given in census returns.^{4,3,5,2} Details about her parents are unknown at present.

Sarah married Benjamin Lambley, base born son of Mary Lambly, on 25th July 1819 at St. Clement, Ipswich, Suffolk, both single of this parish, by banns, witnesses Thomas Easter and Susan Bumstead.^{1,9} A variation of her married name was Lamley.^{2,1} Sarah and Benjamin had eight children; **Mary Ann Lambley c1820-1888**; Susannah Lambley c1823-1893; Sarah Ann Lambley c1827-1887; Elizabeth Lambley c1829-1896; George Lambley c1832-?; Amelia Lambley c1835-1882; Maria Lambley 1838-1892; and Charlotte Lambley 1841-1907.

Sarah appeared on the census of 6th June 1841 in Long Lane, St. Clement, Ipswich, Suffolk (aged 35, living with husband and eight children, born Suffolk)⁴; on the census of 30th March 1851 in Long Lane, St. Clement, Ipswich, Suffolk (wife aged 54, chair woman living with husband, five children and three grandsons (note census says sons), born Ipswich, Suffolk)³; and on the census of 7th April 1861 in Long Lane, St. Clement, Ipswich, Suffolk (wife aged 59 married, living with husband, two children and two grandsons, born Framlingham, Suffolk).⁵

She was widowed when her husband Benjamin died in November 1866 in Ipswich, Suffolk^{6,8} and was buried on Monday 26th November 1866 in Ipswich Cemetery, Belvedere Road, Ipswich, Suffolk, aged 79.⁸

Sarah then appeared on the census of 2nd April 1871 at 1 Long Lane, St. Clement, Ipswich, Suffolk (head aged 75 widow as Sarah Lamley, living with two grandsons, born Dennington, Suffolk).²

Sarah died in August 1871 in Ipswich, Suffolk^{6,7} and was buried on Sunday 6th August 1871 in Ipswich Cemetery, Belvedere Road, Ipswich, Suffolk, aged 80.⁶

References

1. Suffolk Marriage Index 1813 - 1837, Suffolk Family History Society, 1992 - 2005, Ipswich Part B vol:6 page:32.
2. Census 1871, class:RG10 piece:1754 folio:85 page:19, online at www.ancestry.co.uk and www.findmypast.co.uk.
3. Census 1851, class:HO107 piece:1800 folio:176 page:19, online at www.ancestry.co.uk and www.findmypast.co.uk.
4. Census 1841, class:HO107 piece:1043 folio:10 page:13, online at www.ancestry.co.uk and www.findmypast.co.uk.
5. Census 1861, class:RG09 piece:1164 folio:106 page:19, online at www.ancestry.co.uk and www.findmypast.co.uk.
6. National Burial Index for England & Wales v.3, CD-ROM from The Federation of Family History Societies, 2010.
7. England and Wales Death Index 1837 - 2005, Ipswich 1871 Q3 vol:4a page:404, online at www.ancestry.co.uk and www.findmypast.co.uk.
8. England and Wales Death Index 1837 - 2005, Ipswich 1866 Q4 vol:4a page:355, online at www.ancestry.co.uk and www.findmypast.co.uk.
9. Suffolk Records Office (Ipswich) - Parish Records, Ipswich St. Clement fiche:21 of 88

Chapter 27 Xxxxx

Unknown father of Thomas William Ransome